

# "U.S. PUBLIC LAND SURVEY MONUMENT RECORD" OZAUKEE COUNTY, WISCONSIN

TYPE OF MONUMENT: 3/4" X 9' ALUMINUM ROD

STATE PLANE COORDINATES: N: 512791.73

E: 2532255.18

ELEVATION: 874.91 M.S.L. DATUM: 1929

THETA ANGLE: \_\_\_\_\_

FIELD BOOK: 3 PAGE: 36

FIELDWORK BY: 1996 - Tom Genske and Kapur and Associates

RECORD DRAWN BY: MARK BANTON

CONTROL ACCURACY:

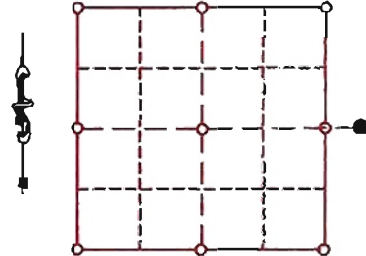
HORIZONTAL: 3RD ORDER, CLASS 1 VERTICAL: 3RD ORDER

CORNER INDEX No. 547-2

SECTION 29

TOWNSHIP 11

RANGE 21



LOCATION

**BASIS OF MONUMENT LOCATION**

1996 - Tom Genske, Ozaukee County Surveyor, Set 3/4" x 9' aluminum rod  
1998 - Kapur and Associates established co-ordinates as part of Ozaukee County remonumentation program.

SEAL:



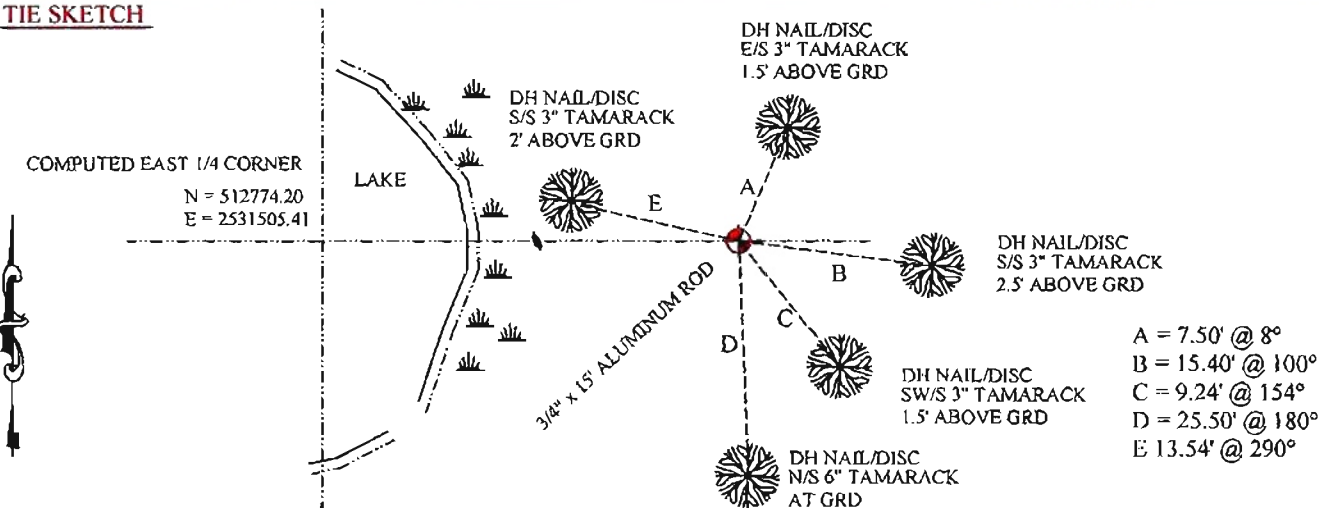
DATA SHOWN HEREON  
IS CERTIFIED AS CORRECT:

*Mark Banton*

Ozaukee County Surveyor

DATE: 12/22/08

**TIE SKETCH**



- A = 7.50' @ 8°
- B = 15.40' @ 100°
- C = 9.24' @ 154°
- D = 25.50' @ 180°
- E = 13.54' @ 290°

**MAINTENANCE RECORD**

- MONUMENT LEGEND**
- = BERNTSEN MONUMENT ( SEE TYPE OF MON. ABOVE)
  - = CONCRETE MONUMENT w/ BRASS CAP
  - = CONCRETE MONUMENT w/ CROSS
  - = 5/8" REBAR WITH ALUMINUM CAP

DATE	BY WHOM	REMARKS
DEC 2008	M. BANTON	Redraw from tie sheet and re-number corner