

OZAUKEE COUNTY

U.S. PUBLIC LAND SURVEY MONUMENT RECORD

U.S. P.L.S. CORNER 19/20 19/20 T. 11 N., R. 22 E. OZAUKEE COUNTY, WI

GEODETIC SURVEY BY: KAPUR & ASSOCIATES, INC. YEAR: 1997

STATE PLANE COORDINATES OF: NORTH 519098.27 EAST 2557783.46

ELEVATION OF STATION: 798.37

HORIZONTAL DATUM: WISCONSIN STATE PLANE COORDINATE, SOUTH ZONE NORTH AMERICAN DATUM: X 1927 1983 VERTICAL DATUM: NATIONAL GEODETIC VERTICAL DATUM OF 1929

CONTROL ACCURACY: THETA ANGLE: 1-26-32.37

HORIZONTAL: 3RD ORDER, CLASS 1; VERTICAL: 3RD ORDER

DESCRIPTION OF MONUMENT AND HOW LOCATION WAS DETERMINED:

FOUND 1" IRON PIPE AS CALLED FOR BY PREVIOUS SURVEY. SET CONCRETE MONUMENT WITH BRASS CAP.

CERTIFICATION

I CERTIFY THAT THE CORNER LOCATION ON THIS RECORD WAS DETERMINED BY ME OR UNDER MY DIRECTION AND CONTROL AND THAT THIS U.S. PUBLIC LAND SURVEY MONUMENT RECORD IS CORRECT AND COMPLETE TO THE BEST OF MY KNOWLEDGE AND BELIEF.

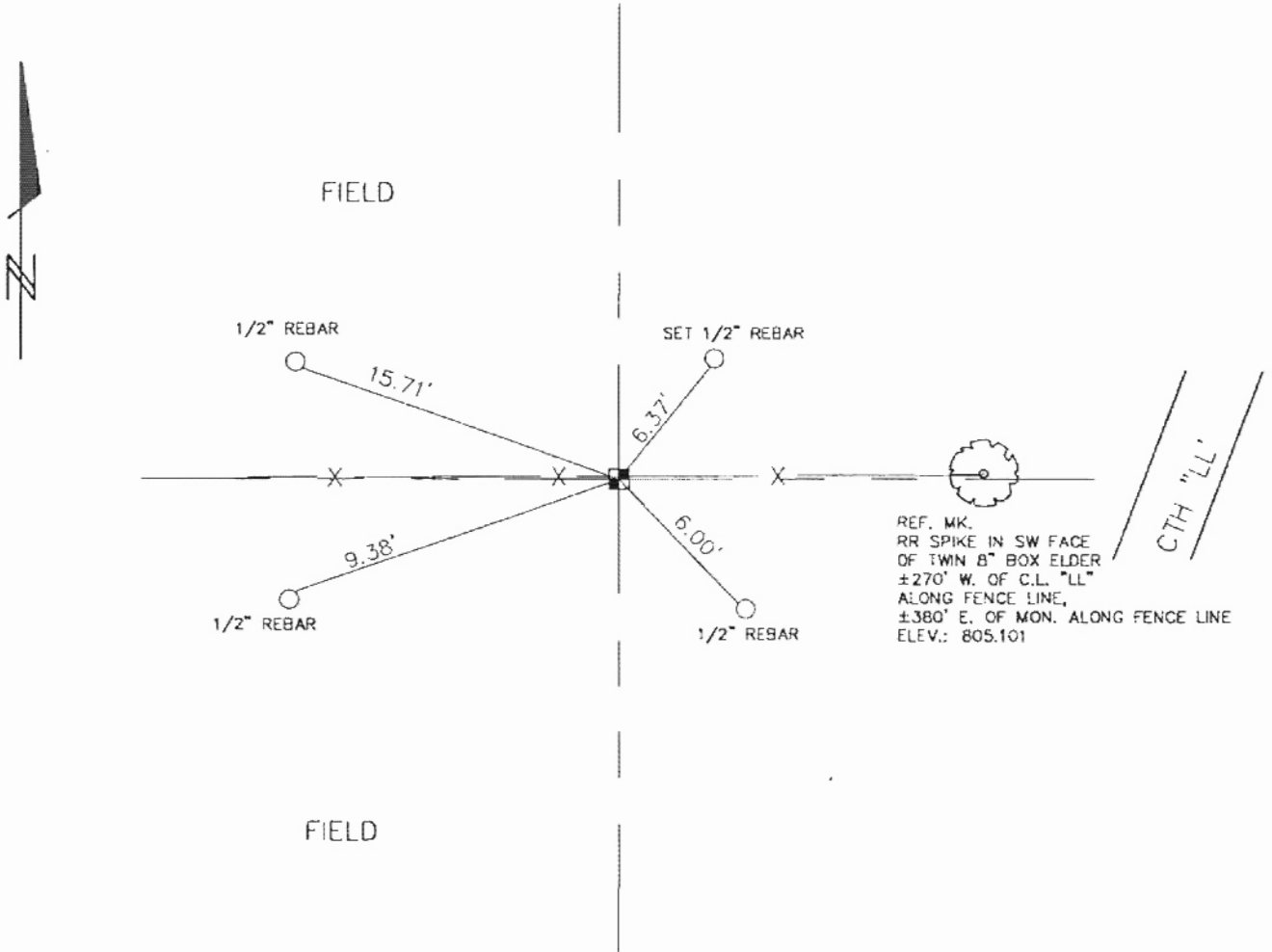
SIGNATURE Thomas J. Gorske S-1317 OZAUKEE COUNTY SURVEYOR



DATE: 6/16/98

**OZAUKEE COUNTY**  
**U.S. PUBLIC LAND SURVEY MONUMENT RECORD**

**PLAN VIEW OF CORNER WITH TIES TO A MINIMUM OF 4 WITNESS MONUMENTS**



**MAINTENANCE RECORD**

**MONUMENT LEGEND**

DATE	INITIAL	REMARKS
11/7/96	B.E.S.	

- ⊗ = BERNTSEN ALUMINUM MONUMENT
- ⊠ = CONCRETE WITH BRASS CAP
- ⊕ = CONCRETE WITH CROSS
- △ = 5/8" REBAR WITH ALUMINUM CAP