

QUARTER SECTION CORNER 16115 TOWNSHIP 11 N, RANGE 22 E, OZAUKEE COUNTY, WISCONSIN
 GEODETIC SURVEY BY: CHICAGO AERIAL SURVEY AERO METRIC

STATE PLANE COORDINATES OF:
 NORTH 524,717.514 ← 46 524,716.69
 EAST 2,565,573.202 ← 1.66 2,565,573.32

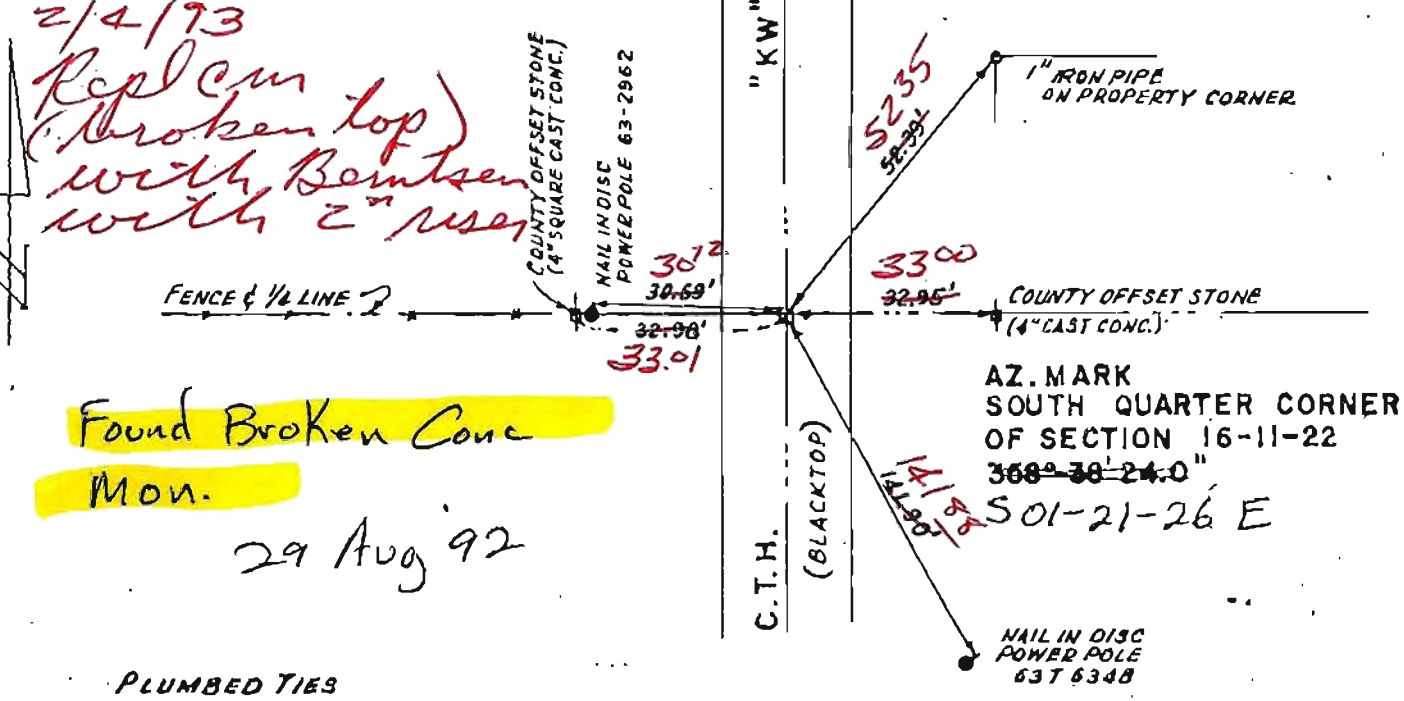
ELEVATION OF STATION: 752.154 THETA ANGLE: +1° 27' 46"

HORIZONTAL DATUM: WISCONSIN STATE PLANE COORDINATE SYSTEM, SOUTH ZONE

VERTICAL DATUM: MEAN SEA LEVEL, 1929 ADJUSTMENT

HORIZONTAL & VERTICAL CONTROL ACCURACY: SECOND ORDER

LOCATION SKETCH:



SURVEYOR'S AFFIDAVIT:

STATE OF WISCONSIN) SS
OZAUKEE COUNTY)

I HEREBY CERTIFY THAT A STONE MON. WAS FOUND 2' DOWN.
 TIES WERE MADE. REPLACED IT WITH A NEW 6" SQUARE
 CAST CONC. MON. WITH BRASS PLUG.

DATE OF SURVEY: MARCH 27, 1967 James C. Eide S - 3
 REGISTERED LAND SURVEYOR