

OZAUKEE COUNTY

U.S. PUBLIC LAND SURVEY MONUMENT RECORD

U.S. P.L.S. CORNER $\frac{5}{8} \frac{4}{9}$ T. 11 N., R. 22 E. OZAUKEE COUNTY, WI

GEODETIC SURVEY BY: KAPUR & ASSOCIATES, INC. YEAR: 1997

STATE PLANE COORDINATES OF:
NORTH 532553.50
EAST 2562816.58

ELEVATION OF STATION: 719.23

HORIZONTAL DATUM: WISCONSIN STATE PLANE COORDINATE, SOUTH ZONE
NORTH AMERICAN DATUM: X 1927 1983
VERTICAL DATUM: NATIONAL GEODETIC VERTICAL DATUM OF 1929

CONTROL ACCURACY: THETA ANGLE: 1-27-22.39

HORIZONTAL: 3RD ORDER, CLASS 1: VERTICAL: 3RD ORDER

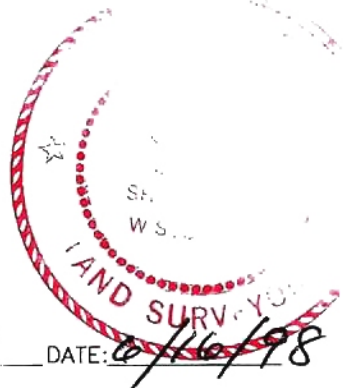
DESCRIPTION OF MONUMENT AND HOW LOCATION WAS DETERMINED:

SET CONCRETE MONUMENT WITH BRASS CAP ON FENCE LINE INTERSECTION,
FOUND NO EVIDENCE OF PREVIOUS MONUMENT.
FENCE INTERSECTION CHECKS WITH TOWESLEY DIMENSIONS.

CERTIFICATION

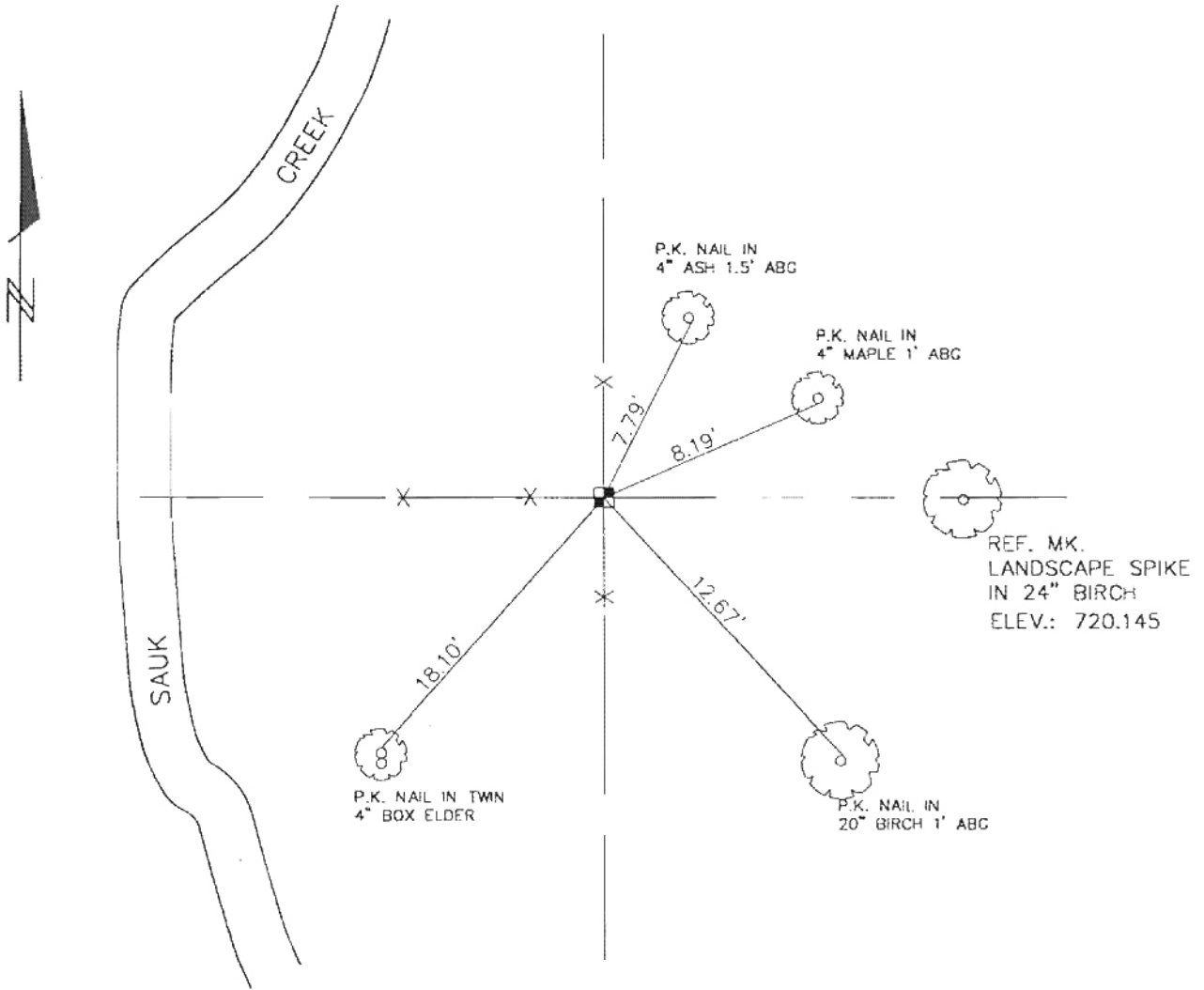
I CERTIFY THAT THE CORNER LOCATION ON THIS RECORD WAS DETERMINED BY ME OR UNDER MY DIRECTION AND CONTROL AND THAT THIS U.S. PUBLIC LAND SURVEY MONUMENT RECORD IS CORRECT AND COMPLETE TO THE BEST OF MY KNOWLEDGE AND BELIEF.

SIGNATURE Thomas Younske S-1317 DATE: 6/16/98
OZAUKEE COUNTY SURVEYOR



OZAUKEE COUNTY
U.S. PUBLIC LAND SURVEY MONUMENT RECORD

PLAN VIEW OF CORNER WITH TIES TO A MINIMUM OF 4 WITNESS MONUMENTS



MAINTENANCE RECORD

MONUMENT LEGEND

DATE	INITIAL	REMARKS
10/3/97	B.E.S.	
_____	_____	_____
_____	_____	_____
_____	_____	_____
_____	_____	_____

- ⊙ = BERTSEN ALUMINUM MONUMENT
- ⊠ = CONCRETE WITH BRASS CAP
- ⊕ = CONCRETE WITH CROSS
- △ = 5/8" REBAR WITH ALUMINUM CAP