

# OZAUKEE COUNTY

## U.S. PUBLIC LAND SURVEY MONUMENT RECORD

U.S. P.L.S. CORNER  $\frac{33}{4} | \frac{33}{4}$  T.  $\frac{12}{11}$  N., R. 22 E. OZAUKEE COUNTY, WI

GEODETIC SURVEY BY: KAPUR & ASSOCIATES, INC. YEAR: 1997

STATE PLANE COORDINATES OF: \_\_\_\_\_  
NORTH 537823.94  
EAST 2565394.48

ELEVATION OF STATION: 728.32

HORIZONTAL DATUM: WISCONSIN STATE PLANE COORDINATE, SOUTH ZONE  
NORTH AMERICAN DATUM: X 1927 \_\_\_\_\_ 1983  
VERTICAL DATUM: NATIONAL GEODETIC VERTICAL DATUM OF 1929

CONTROL ACCURACY: \_\_\_\_\_ THETA ANGLE: 1-27-47.64

HORIZONTAL: 3RD ORDER, CLASS 1: VERTICAL: 3RD ORDER

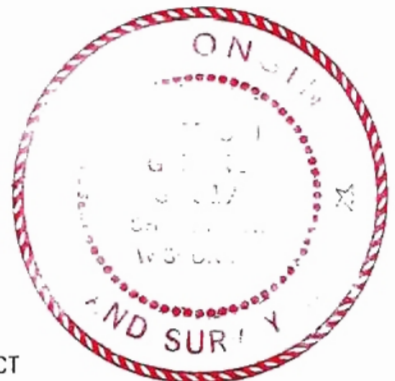
### DESCRIPTION OF MONUMENT AND HOW LOCATION WAS DETERMINED:

FOUND LIMESTONE MONUMENT W/R.R. SPIKE IN TOP AT THE S 1/4 OF SECTION 33, T. 12 N., R. 22 E.. SET BERNTSEN MONUMENT W/BRASS CAP AT THE N 1/4 SECTION 4, T. 11 N., R. 22 E. ON THE TOWNSHIP LINE AT THE AVERAGE FALLING FROM THE NE & NW CORNERS.

### CERTIFICATION

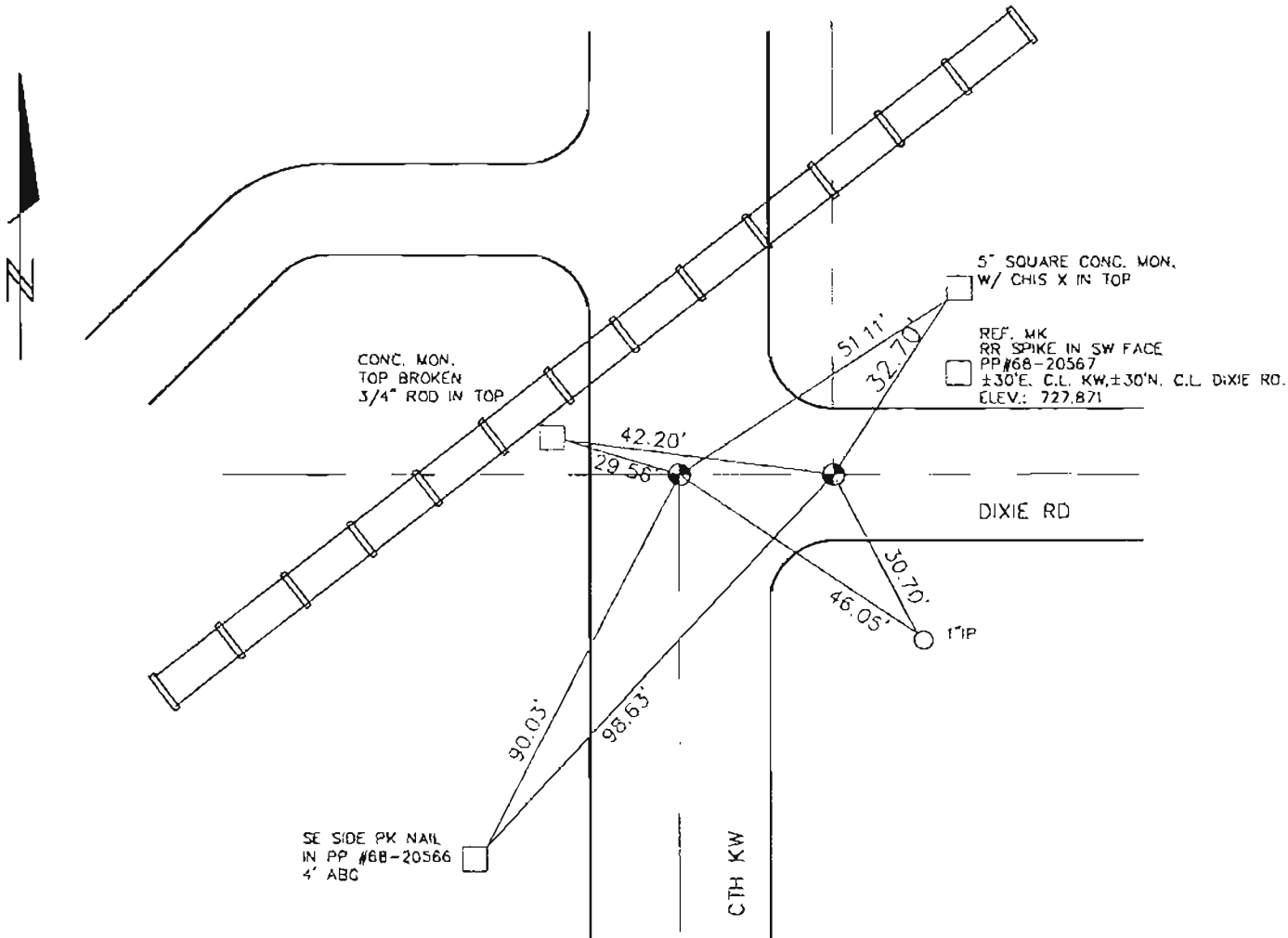
I CERTIFY THAT THE CORNER LOCATION ON THIS RECORD WAS DETERMINED BY ME OR UNDER MY DIRECTION AND CONTROL AND THAT THIS U.S. PUBLIC LAND SURVEY MONUMENT RECORD IS CORRECT AND COMPLETE TO THE BEST OF MY KNOWLEDGE AND BELIEF.

SIGNATURE: Thomas J. Genke S-1317 DATE: 6/16/98  
OZAUKEE COUNTY SURVEYOR



**OZAUKEE COUNTY**  
**U.S. PUBLIC LAND SURVEY MONUMENT RECORD**

**PLAN VIEW OF CORNER WITH TIES TO A MINIMUM OF 4 WITNESS MONUMENTS**



**MAINTENANCE RECORD**

**MONUMENT LEGEND**

DATE	INITIAL	REMARKS
2/10/97	B.E.S.	

- ⊕ = BERNTSEN PLASTIC MON. W/ BRASS CAP
- ⊞ = LIMESTONE MONUMENT
- ⊞ = CONCRETE WITH CROSS
- △ = 5/8" REBAR WITH ALUMINUM CAP