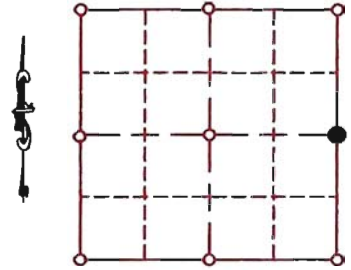


**"U.S. PUBLIC LAND SURVEY MONUMENT RECORD"
OZAUKEE COUNTY, WISCONSIN**

TYPE OF MONUMENT: Berntsen monument w/brass cap
 STATE PLANE COORDINATES: N: 497321.14
 E: 2551757.93
 ELEVATION: 756.39 M.S.L. DATUM: 1929
 FIELD BOOK: 2 PAGE: 69
 FIELDWORK BY: Tom Genske & kapur and Associates
 RECORD DRAWN BY: MARK BANTON from Tom Genske fieldnotes
 CONTROL, ACCURACY:
 HORIZONTAL: 3RD ORDER, CLASS 1 VERTICAL: 3RD ORDER

CORNER INDEX No. 421
 SECTION 7
 TOWNSHIP 10
 RANGE 22



LOCATION

BASIS OF MONUMENT LOCATION

1967 - Clarence Piepenburg S-139. A plug was found 4' under surface of pavement
 1995- Tom Genske (county surveyor)-excavated and found 2-1/2" x 3" iron plug attached to 7"x1/2" rusted rod set in concrete 6" below surface. Poor Condition- replaced with a Plastic Berntsen monument with brass cap.

SEAL:

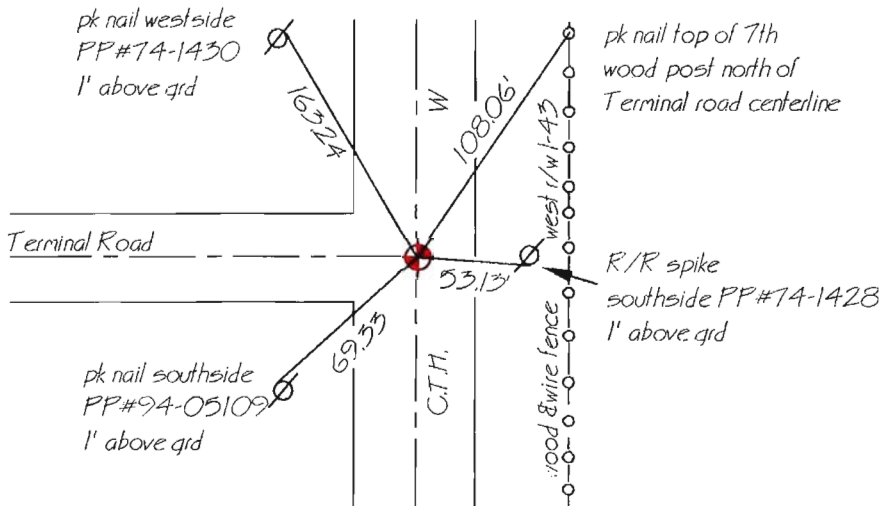


DATA SHOWN HEREON
IS CERTIFIED AS CORRECT:

Mark Banton
Ozaukee County Surveyor

DATE: 1/24/08

TIE SKETCH



MAINTENANCE RECORD

MONUMENT LEGEND

- = BERNTSEN MONUMENT (SEE TYPE OF MON. ABOVE)
- = CONCRETE MONUMENT w/ BRASS CAP
- = CONCRETE MONUMENT w/ CROSS
- = 5/8" REBAR WITH ALUMINUM CAP

DATE	BY WHOM	REMARKS
1/24/08	m. banton	re-number to match new numbering system