

U.S. PUBLIC LAND SURVEY MONUMENT RECORD  
OZAUKEE COUNTY **233**

QUARTER SECTION CORNER 36 | 36 TOWN 10 NORTH, RANGE 21 EAST  
CITY OF MEQUON, OZAUKEE COUNTY

WISCONSIN STATE PLANE COORDINATES: NORTH 473,158.24  
EAST 2,544,751.96  
THETA ANGLE + 1-24-21 ELEVATION OF CORNER: 708.446

HORIZONTAL DATUM: WISCONSIN STATE PLANE SYSTEM, SOUTH ZONE  
NORTH AMERICAN DATUM 1927 ADJUSTMENT  
VERTICAL DATUM: MEAN SEA LEVEL 1929 ADJUSTMENT

HORIZONTAL CONTROL ACCURACY: 3RD ORDER, CLASS 1  
VERTICAL CONTROL ACCURACY: 2ND ORDER, CLASS 2 MONUMENT NO. 158

DESCRIPTION OF MONUMENT: FOUND A CONCRETE MONUMENT WITH BRASS CAP IN A CAST IRON HANDHOLE WHICH WAS SET BY CLARENCE H. PIEPENBURG, S-139, IN JULY 1969, WHICH WAS SET USING OLD SURVEYS SINCE NO EVIDENCE OF THE ORIGINAL CORNER WAS FOUND. DID NOT FIND ANY OLD WITNESS TIES, EXCEPT FOR THE SOUTH 1/4 CORNER SEC 36, T10N, R21E WHICH CHECKED OUT. MONUMENT ALSO APPEARED TO BE UNDISTURBED, THEREFORE ACCEPTED ITS LOCATION AS CORRECT AND REPLACED WITH A BERNTSEN W-1-B ALUMINUM MONUMENT AND REFERENCED THE SAME AS SHOWN HEREON.

CERTIFICATION

I certify that the corner location on this record was determined by me or under my direction and control and that this U.S. Public Land Survey Monument Record is correct and complete to the best of my knowledge and belief.

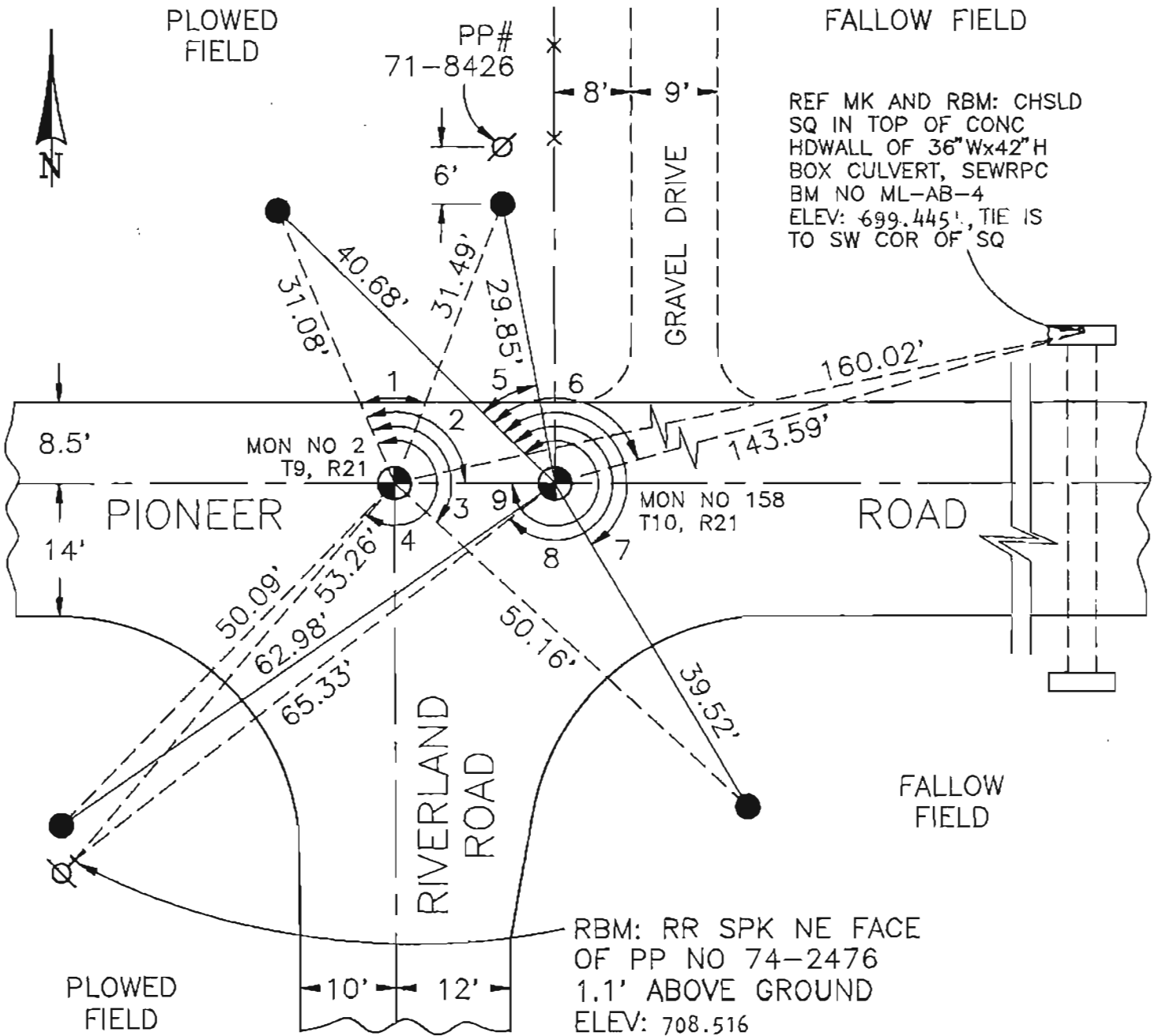


SIGNATURE Thomas J. Genske  
Ozaukee County Surveyor

S-1317 DATE: 6/28/94

# U.S. PUBLIC LAND SURVEY MONUMENT RECORD OZAUKEE COUNTY

## PLAN VIEW OF CORNER WITH TIES TO A MINIMUM 4 WITNESS MONUMENTS



### ANGLES

1. 44°07'00"
2. 112°49'04"
3. 155°35'06"
4. 246°57'23"
5. 34°53'24"
6. 122°36'03"
7. 194°45'34"
8. 280°23'09"
9. 348°40'33"

Bearing: N 86-15-27 E  
To Traverse Sta. AA-179

MON NO 158, R21  
MAINTENANCE RECORD

DATE	INIT	REMARKS

NOTE: ALL DISTANCES ARE MEASURED ELECTRONICALLY

- DENOTES BERNTSEN W-1-B ALUMINUM MONUMENT
- DENOTES 5/8" REBAR WITH ALUMINUM CAP