

RECORD OF U.S. PUBLIC LAND SURVEY CONTROL STATION

U.S. PUBLIC LAND SURVEY CORNER $\frac{20}{29}$ | $\frac{21}{28}$ T12 N, R 21 E, Ozaukee COUNTY, WIS.

GEODETIC SURVEY BY: ALSTER & ASSOCIATES, INC. YEAR: 1977

STATE PLANE COORDINATES OF: SECTION CORNER
 NORTH 547,146.53
 EAST 2,530,653.13

ELEVATION OF STATION: 824.58

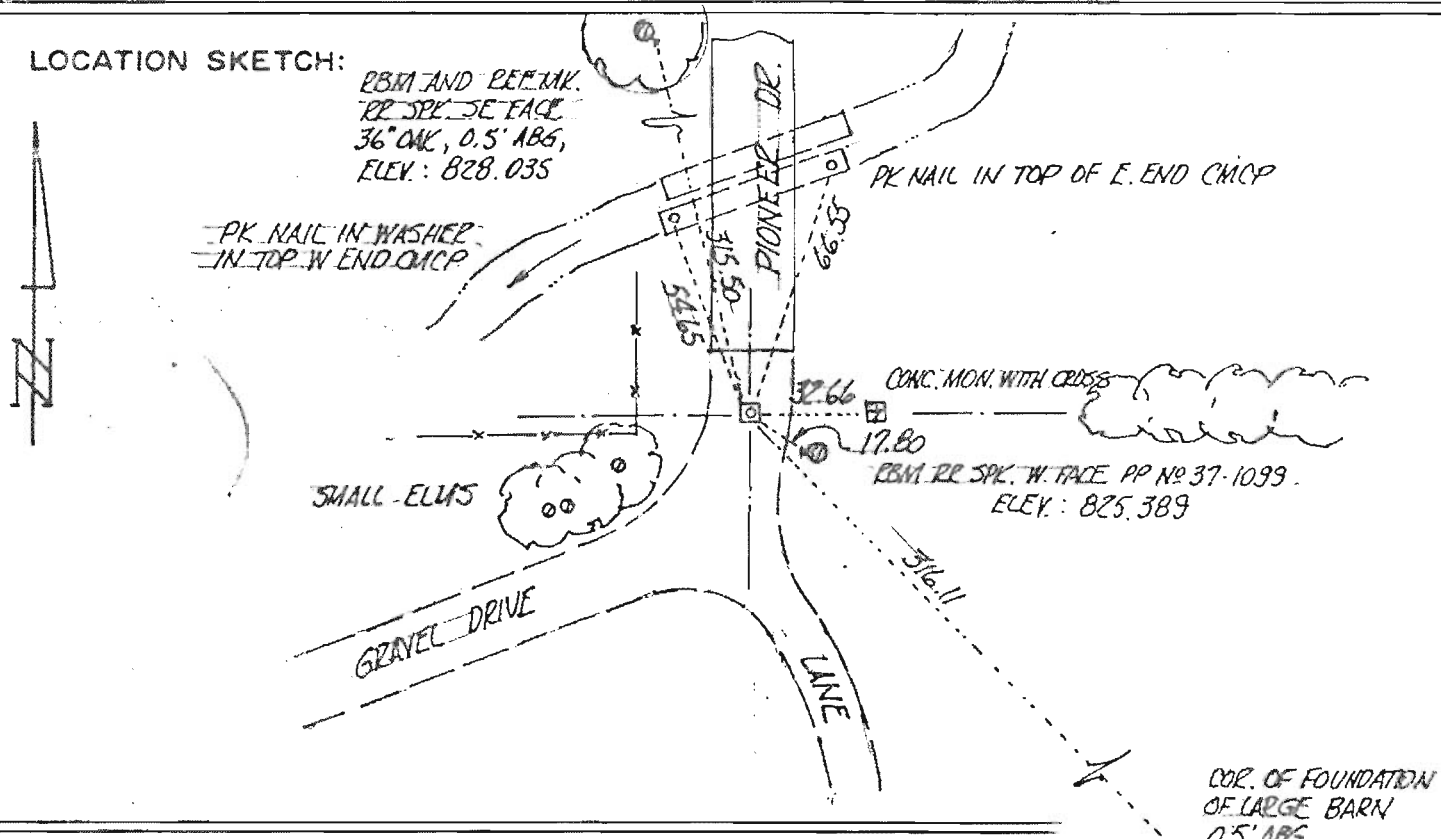
HORIZONTAL DATUM: WISCONSIN STATE PLANE COORDINATE SYSTEM, SOUTH ZONE

VERTICAL DATUM: NATIONAL GEODETIC VERTICAL DATUM OF 1929

CONTROL ACCURACY: THETA ANGLE: +1-22-26

HORIZONTAL: THIRD ORDER, CLASS I VERTICAL: SECOND ORDER, CLASS II

LOCATION SKETCH:



SURVEYOR'S AFFIDAVIT:

STATE OF WISCONSIN) SS
 WAUKESHA COUNTY)

I HEREBY CERTIFY THAT I found a broken concrete monument as set by Ronald A. Weis, S-i215, to mark this corner in June 1977; replacing an old cut limestone monument then marking this corner; and that I replaced the broken monument with a new concrete monument with brass cap, and referenced the same as shown hereon.

DATE OF SURVEY: 31 May 1986

Kurt Bauer
 REGISTERED LAND SURVEYOR

S - 157

