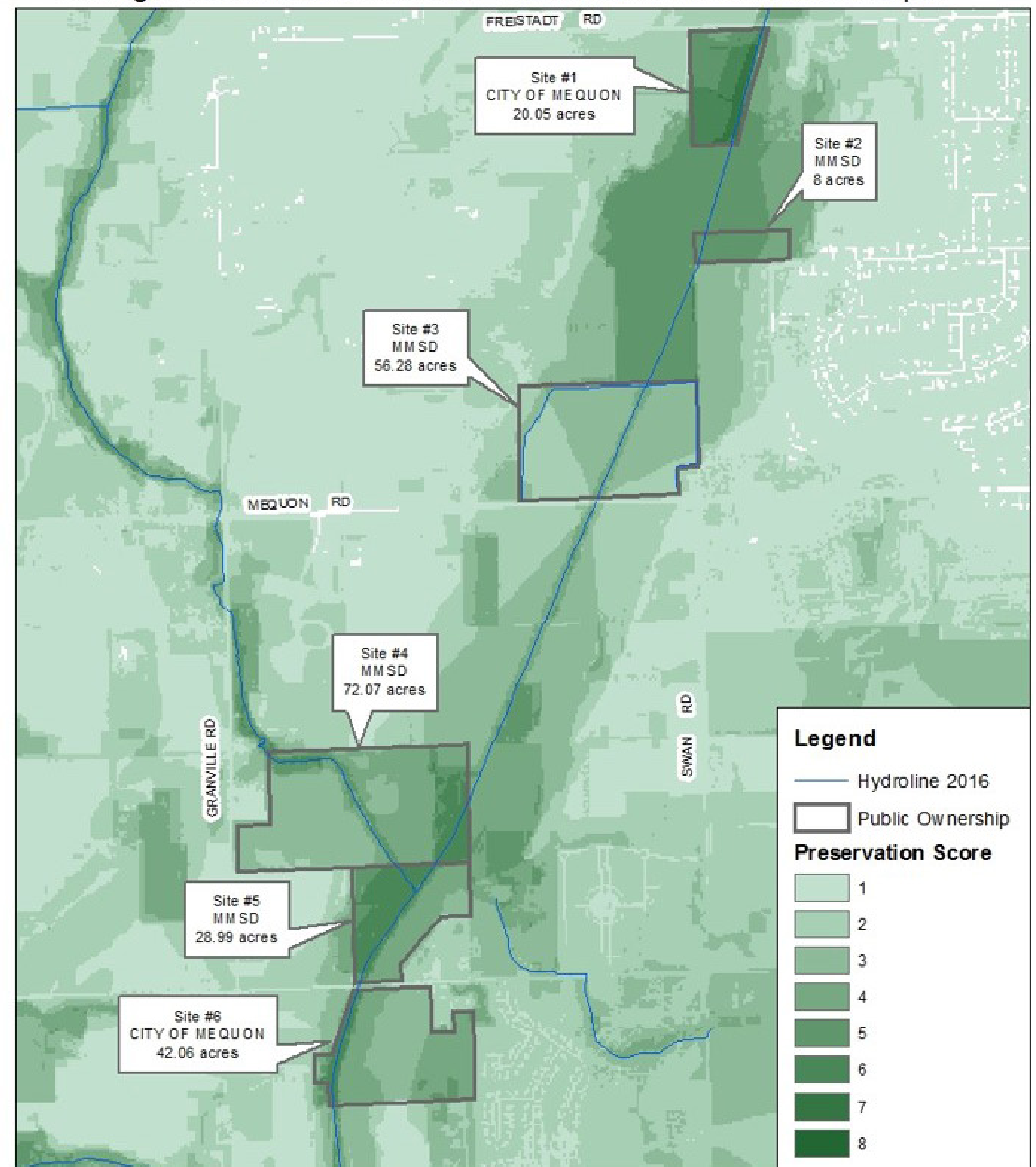


# Why is the Little Menomonee River so Important?

Between 2016 and 2018, Ozaukee County worked with partners to develop a computer model (GIS tool) that identifies areas that are priorities for preservation based on features that Mequon residents and landowners value. These features include clean water, groundwater recharge, flood protection, and wildlife habitat.

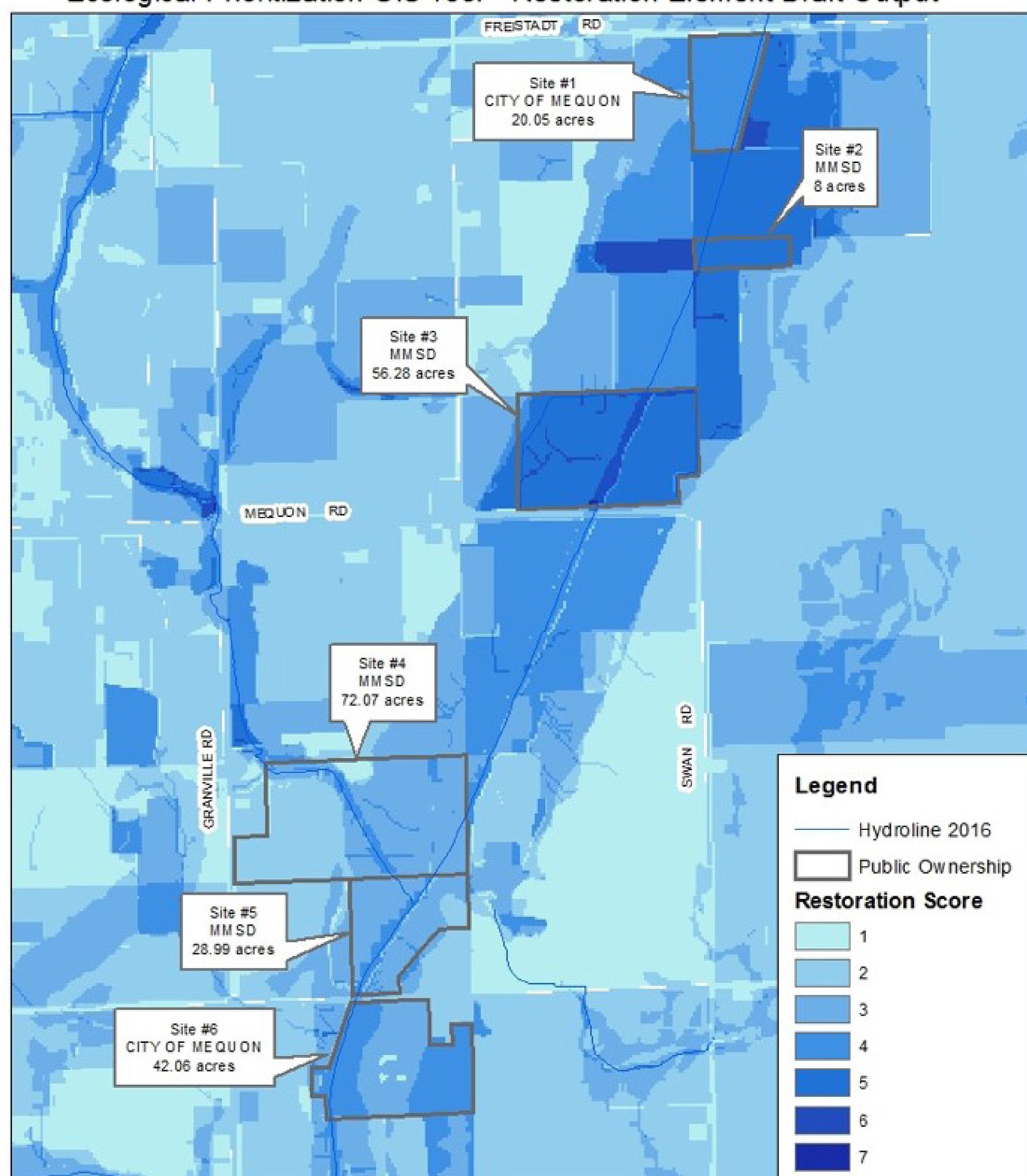
By pinpointing where these areas overlap, especially on publicly-owned parcels, Mequon can see where it can get the “most bang for its buck,” preserving and restoring these places while we can.

Little Menomonee River and Creek Habitat Restoration Project: Ecological Prioritization GIS Tool—Preservation Element Draft Output



This map shows the model’s results for areas that currently are more effective at providing valued community features. **The darker the color, the higher the “score”** (the more important to preserve). Public acquisition of land (parcels outlined) has focused on these priority areas.

Little Menomonee River and Creek Habitat Restoration Project: Ecological Prioritization GIS Tool—Restoration Element Draft Output



The model also identified areas that, if restored, could enhance valued features. This map shows the model’s results for areas with restoration potential. Several publicly-owned parcels on the **Little Menomonee River corridor** were identified as among the most important areas in Mequon for restoration.