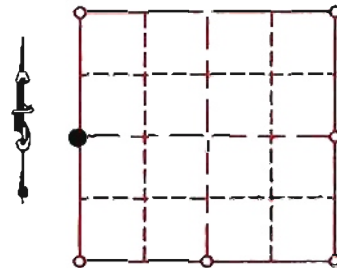


**"U.S. PUBLIC LAND SURVEY MONUMENT RECORD"  
OZAUKEE COUNTY, WISCONSIN**

TYPE OF MONUMENT: Concrete Monument w/ brass cap  
 STATE PLANE COORDINATES: N: 501382.31  
 E: 2525146.42  
 ELEVATION: 854.461 M.S.L. DATUM: 1929

CORNER INDEX No. 451  
 SECTION 4  
 TOWNSHIP 10  
 RANGE 21

FIELD BOOK: redraw PAGE: Tom Genske dossier 12/14/96  
 FIELDWORK BY: Tom Genske & Kapur and Associates  
 RECORD DRAWN BY: MARK BANTON  
 CONTROL ACCURACY:  
 HORIZONTAL: 3RD ORDER CLASS 1 VERTICAL: 3RD ORDER



LOCATION

BASIS OF MONUMENT LOCATION

SEAL:

Tom Genske (County Surveyor) excavated an area approximately 10' x 10' - 2' deep at location of two iron pipes that were found. Pipes were approximately 7' apart. No other monuments were found. Accepted northerly iron pipe as corner fit CSM's. Replaced it with a 6" square concrete x 36" concrete monument with brass cap.

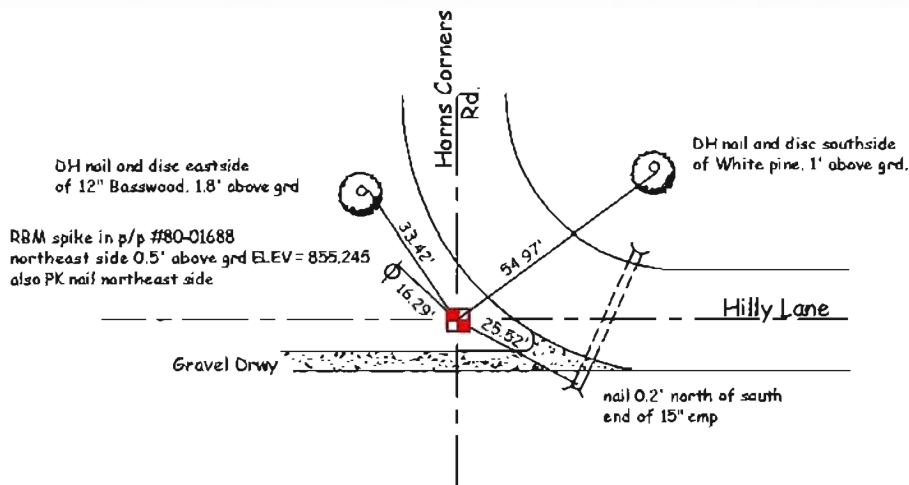


DATA SHOWN HEREON  
IS CERTIFIED AS CORRECT:

*Mark Banton*  
Ozaukee County Surveyor

DATE: 1-9-08

TIE SKETCH



MAINTENANCE RECORD

MONUMENT LEGEND

- = BERNTSEN MONUMENT ( SEE TYPE OF MON. ABOVE)
- = CONCRETE MONUMENT w/ BRASS CAP
- = CONCRETE MONUMENT w/ CROSS
- = 5/8" REBAR WITH ALUMINUM CAP

DATE	BY WHOM	REMARKS
1-09-08	M. Banton	re-number corner