

U.S. PUBLIC LAND SURVEY MONUMENT RECORD
OZAUKEE COUNTY 254

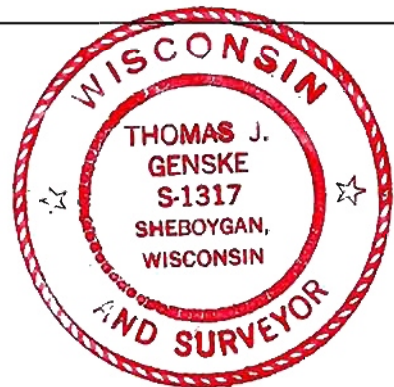
QUARTER SECTION CORNER 31 | 31 TOWN 10 NORTH, RANGE 21 EAST
CITY OF MEQUON, OZAUKEE COUNTY

WISCONSIN STATE PLANE COORDINATES: NORTH 472,129.27
EAST 2,518,308.99
THETA ANGLE + 1-20-15 ELEVATION OF CORNER: 885.651
HORIZONTAL DATUM: WISCONSIN STATE PLANE SYSTEM, SOUTH ZONE
NORTH AMERICAN DATUM 1927 ADJUSTMENT
VERTICAL DATUM: MEAN SEA LEVEL 1929 ADJUSTMENT
HORIZONTAL CONTROL ACCURACY: 3RD ORDER, CLASS 1
VERTICAL CONTROL ACCURACY: 2ND ORDER, CLASS 2 MONUMENT NO. 168

DESCRIPTION OF MONUMENT: FOUND A PK NAIL IN ROADWAY SURFACE, OFFSET PK NAIL AND EXCAVATED AROUND IT. FOUND ONE RAILROAD SPIKE AND TWO PK NAILS AT VARIOUS DEPTHS BENEATH THE ORIGINAL PK NAIL. FOUND A 7"x8" CUT LIMESTONE MONUMENT 13" DOWN. MONUMENT WAS IN FAIR CONDITION WITH A CUT CROSS ON TOP. CROSS CHECKED TO OFFSET NAILS TO WITHIN ±0.15'. MONUMENT WAS ORIGINALLY SET BY H.S. COE IN 1869. ACCEPTED LIMESTONE MONUMENT LOCATION AS CORRECT AND REPLACED WITH A BERNTSEN W-1-B ALUMINUM MONUMENT. ALSO SET FOUR 2" ALUMINUM SURVEY CAPS ON 5/8" REBARS AS NEW WITNESS MONUMENTS.

CERTIFICATION

I certify that the corner location on this record was determined by me or under my direction and control and that this U.S. Public Land Survey Monument Record is correct and complete to the best of my knowledge and belief.

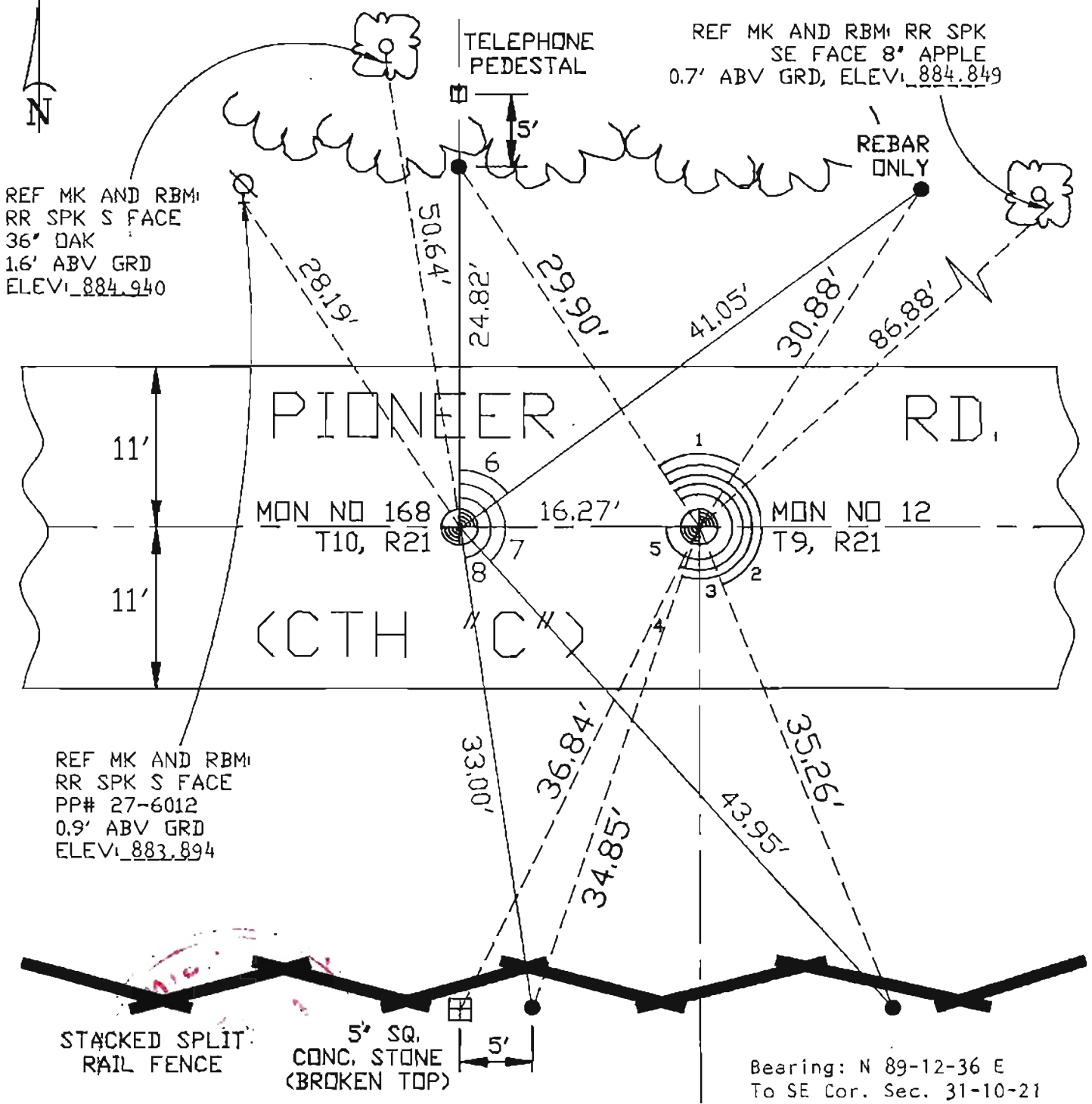


SIGNATURE Thomas J. Genske S-1317 DATE: 6/28/94

THIS INSTRUMENT DRAFTED BY: JACK D. GROSHEK

U.S. PUBLIC LAND SURVEY MONUMENT RECORD OZAUKEE COUNTY

PLAN VIEW OF CORNER WITH TIES TO 4 WITNESS MONUMENTS.



MON NO 168, R21	
DATE	INIT. REMARKS

- 4'S
1. 61°57'12"
 2. 192°16'44"
 3. 234°07'07"
 4. 241°07'51"
 5. 303°58'54"
 6. 49°28'35"
 7. 139°15'04"
 8. 173°38'03"

NOTE: ALL DISTANCES ARE MEASURED ELECTRONICALLY

- DENOTES BERNTSEN W-1-B ALUMINUM MONUMENT
- DENOTES 5/8" REBAR WITH ALUMINUM CAP

168