

U.S. PUBLIC LAND SURVEY MONUMENT RECORD
OZAUKEE COUNTY

239

QUARTER SECTION CORNER 34 | 35 TOWN 10 NORTH, RANGE 21 EAST
CITY OF MEQUON, OZAUKEE COUNTY

WISCONSIN STATE PLANE COORDINATES: NORTH ~~472,781.83~~ 472,781.72
EAST ~~2,536,814.67~~ 2,536,814.37

THETA ANGLE +1-23-07 ELEVATION OF CORNER: 746.278

HORIZONTAL DATUM: WISCONSIN STATE PLANE SYSTEM, SOUTH ZONE

NORTH AMERICAN DATUM X 1927 1983 ADJUSTMENT

VERTICAL DATUM: MEAN SEA LEVEL 1929 ADJUSTMENT

HORIZONTAL CONTROL ACCURACY: 3RD ORDER, CLASS 1

VERTICAL CONTROL ACCURACY: 2ND ORDER, CLASS 2

MONUMENT NO. 5A

DESCRIPTION OF MONUMENT: FOUND NO EVIDENCE OF CORNER DUE TO SANITARY SEWER CONSTRUCTION. FOUND FOUR TIES FROM DOSSIER BY PATRICK L. WORDEN, S-1196, AND DATED 4/21/87. PATRICK L. WORDEN HAD SET A STANDARD S.E.W.R.P.C. CONCRETE MONUMENT WITH BRASS PLUG WHICH REPLACED A 3/4" IRON PIPE FOUND 1± BELOW ROAD SURFACE WHICH FIT TIE SHEET OF ZIMMERMAN ENGINEERING. USING FOUR TIES FROM DOSSIER DATED 4/21/87, RESET CORNER WITH A BERNTSEN W-1-B ALUMINUM MONUMENT AND REFERENCED THE SAME AS SHOWN HEREON.

CERTIFICATION

I certify that the corner location on this record was determined by me or under my direction and control and that this U.S. Public Land Survey Monument Record is correct and complete to the best of my knowledge and belief.



SIGNATURE

Thomas J. Genske
Ozaukee County Surveyor

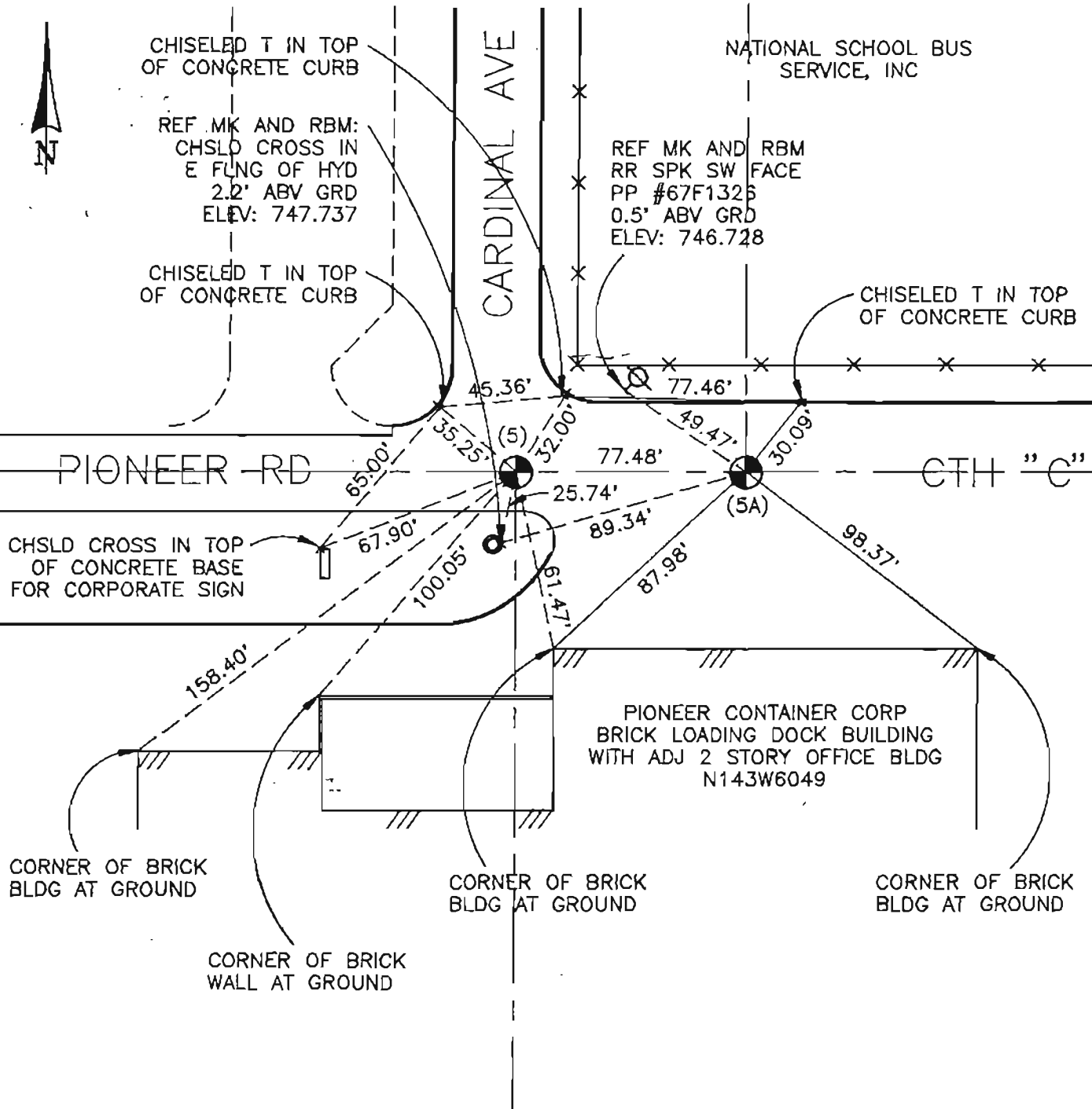
S-1317

DATE: 6/28/94

161

U.S. PUBLIC LAND SURVEY MONUMENT RECORD OZAUKEE COUNTY

PLAN VIEW OF CORNER WITH TIES TO A MINIMUM 4 WITNESS MONUMENTS



MON NO 5A, R21
MAINTENANCE RECORD

DATE	INIT	REMARKS

 DENOTES BERNTSEN W-1-B ALUMINUM MONUMENT

161