

"U.S. PUBLIC LAND SURVEY MONUMENT RECORD"
OZAUKEE COUNTY, WISCONSIN

TYPE OF MONUMENT: Berntsen plastic monument w/ brass cap

STATE PLANE COORDINATES: N: 569655.42

E: 2564503.86

ELEVATION: 748.13 M.S.L. DATUM: 1929

FIELD BOOK: K&A Folder PAGE: 858

FIELDWORK BY: Kapur and Associates 1999

RECORD DRAWN BY: MARK BANTON

CONTROL ACCURACY:

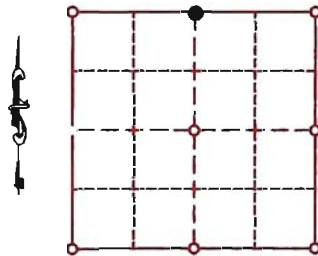
HORIZONTAL: 3RD ORDER CLASS 1 VERTICAL: 3RD ORDER

CORNER INDEX No. 1078

SECTION 4

TOWNSHIP 12

RANGE 22



LOCATION

SEAL:

BASIS OF MONUMENT LOCATION

1999 - KAPUR AND ASSOCIATES, SET BERNTSEN MONUMENT w/BRASS CAP ON STRAIGHT LINE BETWEEN SHEBOYGAN COUNTY MONUMENTS. FOUND PK NAIL 0.05' SOUTH OF STRAIGHT LINE

2005 - MARK BANTON S-1691 - REDRAW DOSSIER TO SHOW CO-ORDINATES AND ELEVATION FROM OZAUKEE COUNTY REMONUMENTATION PROGRAM.



DATA SHOWN HEREON IS CERTIFIED AS CORRECT:

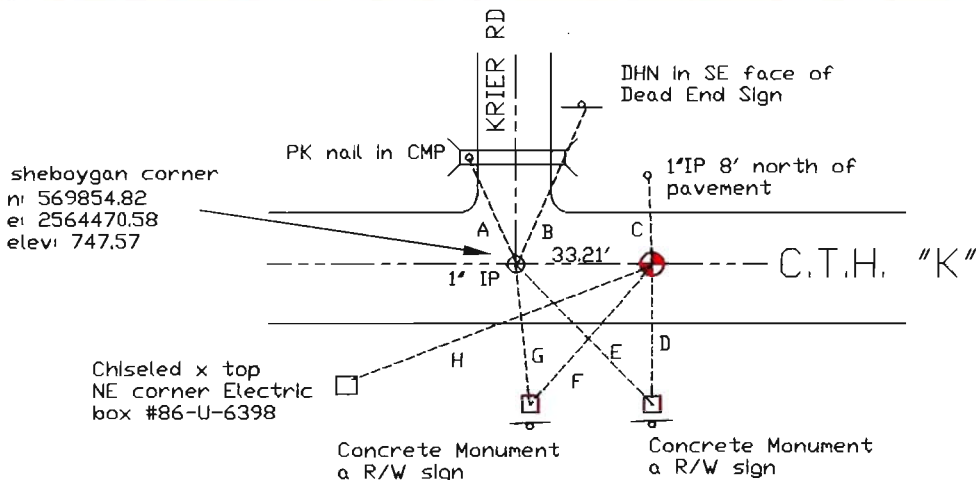
Mark Banton 9 Feb 07

Ozaukee County Surveyor

DATE: 15 FEBRUARY 2005

TIE SKETCH

- A=33.95'
- B=84.20'
- C=19.53'
- D=25.09'
- E=42.15'
- F=36.57'
- G=24.61'
- H=72.19'



MAINTENANCE RECORD

MONUMENT LEGEND

- = BERNTSEN MONUMENT (SEE TYPE OF MON. ABOVE)
- = CONCRETE MONUMENT w/ BRASS CAP
- = CONCRETE MONUMENT w/ CROSS
- = 5/8" REBAR WITH ALUMINUM CAP

DATE	BY WHOM	REMARKS
14 feb 07	m. banton	re-number corner