

"U.S. PUBLIC LAND SURVEY MONUMENT RECORD"
OZAUKEE COUNTY, WISCONSIN

TYPE OF MONUMENT: Concrete Monument no cap - set PK nail

STATE PLANE COORDINATES: N: 569703.27

E: 2567145.69

ELEVATION: 723.30 M.S.L. DATUM: 1929

FIELD BOOK: K&A Folder PAGE: 859

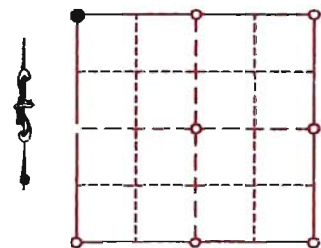
FIELDWORK BY: Kapur and Associates 1999

RECORD DRAWN BY: MARK BANTON

CONTROL ACCURACY:

HORIZONTAL: 3RD ORDER, CLASS 1 VERTICAL: 3RD ORDER

CORNER INDEX No. 1076
 SECTION 3
 TOWNSHIP 12
 RANGE 22



LOCATION

BASIS OF MONUMENT LOCATION

1999 - KAPUR AND ASSOCIATES, FOUND CONCRETE MONUMENT W/ NO- CAP SET PK NAIL ON STRAIGHT LINE BETWEEN SHEBOYGAN COUNTY MONUMENTS.

2005 - MARK BANTON S-1691 - REDRAW DOSSIER TO SHOW CO-ORDINATES AND ELEVATION FROM OZAUKEE COUNTY REMONUMENTATION PROGRAM.

SEAL:



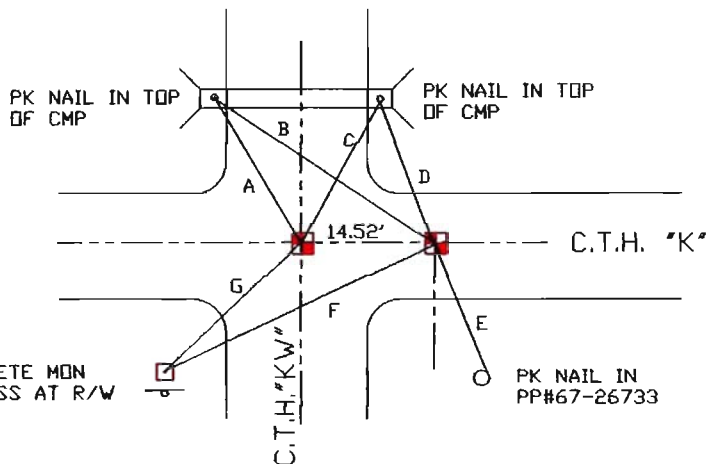
DATA SHOWN HEREON IS CERTIFIED AS CORRECT:

Mark Banton 9 FEB 07
 Ozaukee County Surveyor

DATE: 15 FEBRUARY 2005

TIE SKETCH

- A=31.09'
- B=42.57'
- C=31.56'
- D=24.19'
- E=45.68'
- F=61.84'
- G=49.49'



MAINTENANCE RECORD

- MONUMENT LEGEND
- = BERNTSEN MONUMENT (SEE TYPE OF MON. ABOVE)
 - = CONCRETE MONUMENT w/ BRASS CAP
 - = CONCRETE MONUMENT w/ CROSS
 - = 5/8" REBAR WITH ALUMINUM CAP

| DATE | BY WHOM | REMARKS |
|------------|-----------|------------------|
| 9 feb 2007 | m. banton | re-number corner |
| | | |
| | | |