

**"U.S. PUBLIC LAND SURVEY MONUMENT RECORD"  
OZAUKEE COUNTY, WISCONSIN**

TYPE OF MONUMENT: Berntsen plastic monument w/ brass cap

STATE PLANE COORDINATES: N: 554137.05

E: 2583424.15

ELEVATION: 626.95 M.S.L. DATUM: 1929

FIELD BOOK: BELGIUM PAGE: 709

FIELDWORK BY: KAPUR AND ASSOCIATES

RECORD DRAWN BY: MARK BANTON

CONTROL ACCURACY:

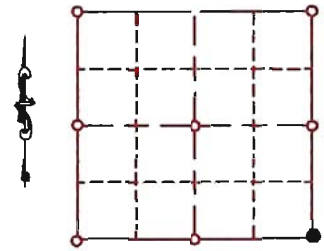
HORIZONTAL: 3RD ORDER, CLASS 1 VERTICAL: 3RD ORDER

CORNER INDEX No. 909

SECTION 13

TOWNSHIP 12

RANGE 22



LOCATION

SEAL:



BASIS OF MONUMENT LOCATION

KAPUR AND ASSOCIATES  
REPLACED PK NAIL WITH BERNSTEN PLASTIC MONUMENT  
WITH BRASS CAP

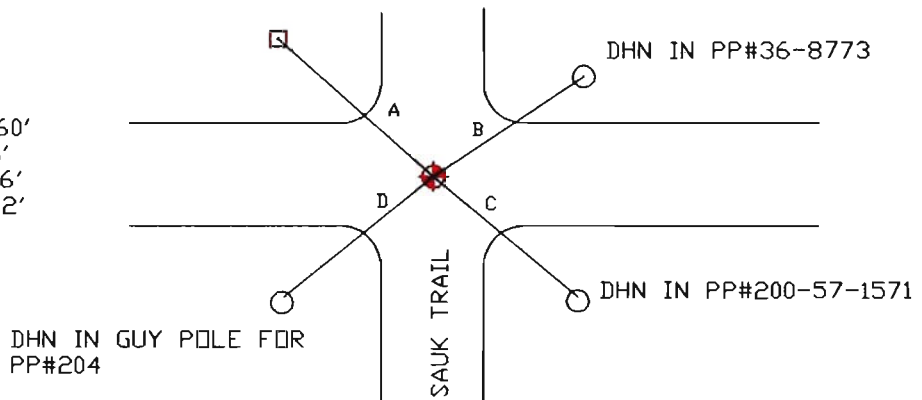
DATA SHOWN HEREON  
IS CERTIFIED AS CORRECT:

*Mark Banton 5 Feb 07*  
Ozaukee County Surveyor

DATE: 01-05-2005

TIE SKETCH

- A = 337°,64.60'
- B = 35°,40.16'
- C = 119°,56.96'
- D = 206°,66.12'



MAINTENANCE RECORD

- MONUMENT LEGEND
- = BERNTSEN MONUMENT ( SEE TYPE OF MON. ABOVE)
  - = CONCRETE MONUMENT w/ BRASS CAP
  - = CONCRETE MONUMENT w/ CROSS
  - = 5/8" REBAR WITH ALUMINUM CAP

DATE	BY WHOM	REMARKS
5 feb 07	M. BANTON	RE-NUMBER CORNER