

# OZAUKEE COUNTY

## U. S. PUBLIC LAND SURVEY MONUMENT RECORD

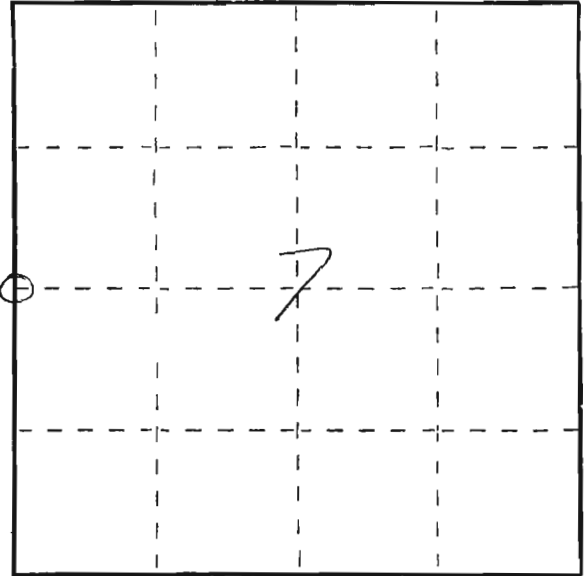
**INSTRUCTIONS:** This record shall show the location of the corner and shall include all of the following nine elements (a through i).

- (a) Identify the corner by reference to the U.S. public land survey system.

O<sub>c</sub> = Corner monument restored.

W. 1/4 COR. SEC. 7  
T. 12 N. - R. 22 E.

BELGIUM, WI.



- (b) Describe any record evidence, monument evidence, occupational evidence, testimonial evidence or any other material evidence you considered, and whether the monument was found or placed.

FOUND CAPELLE'S MON. FROM 1973 SURVEY (SEE ATTACHED DOSSIE SHEET.) MON. DID NOT FIT DISTANCE RECORDED ON AUDIER'S 1878 REMONUMENTATION PLAT. EXCAV. 6' X 10' X 15' AREA @ CAPELLE'S PT. FOUND NOTHING. SET MONUMENT USING AUDIER'S (SINGLE PROPORTIONAL) MEASUREMENTS

- (c) In the plan view drawing below, provide reference ties to at least 4 witness monuments, or, if the location is within a municipality, to at least 2 witness monuments. (Witness monuments shall be made of concrete, natural stone, iron or other equally durable material.) Describe witness monuments.

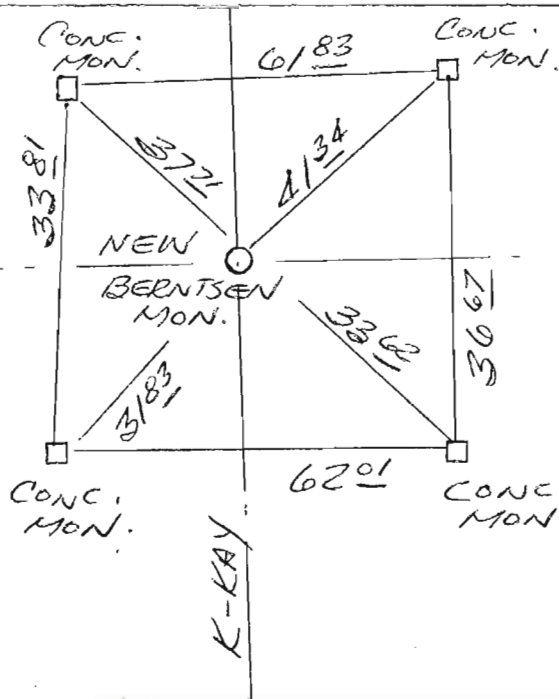
- (d) Show a plan view drawing depicting the relevant monuments and reference ties which is sufficient in detail to enable accurate relocation of the corner monument if the corner monument is disturbed. Indicate north.

RD



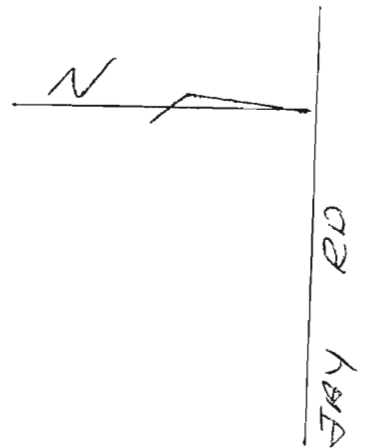
20  
#10

NOTE: AREA EXCAV.  
IN CUT SECTION.  
3" BIT. PAVT.  
6 TO 9" GRAVEL,  
THAN CLAY. NO  
TOP SOIL.

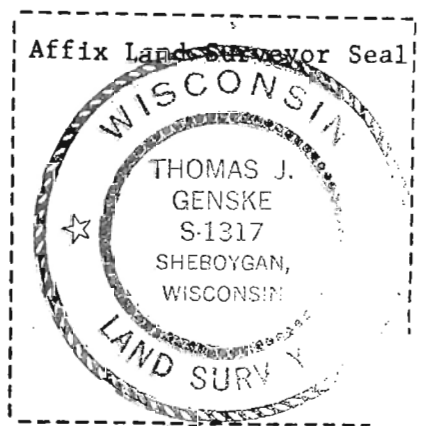


40

HICKORY GROVE



(i) I, THOMAS J. GENSKG  
(type or print name) certify that the corner location shown  
on this record was determined by me or under my direction and  
control and that this U.S. Public Land Survey Monument Record is  
correct and complete to the best of my knowledge and belief.



Thomas J. Genske  
Signature COUNTY SURVEYOR.

Date 3/31/83

20