

OZAUKEE COUNTY

U.S. PUBLIC LAND SURVEY MONUMENT RECORD

Note: This form is intended and designed to fulfill all requirements of Wisconsin Administrative Code, Chapter A-E 5.02, U.S. Public Land Survey Monument Record (3)(a)(b)(c)(d)(e)(f)(g)(h)(i).

(a) CORNER LOCATION: S 1/4 SECTION 13

TOWNSHIP 12 NORTH

RANGE 22 EAST

TOWN CITY/VILLAGE BELGIUM

STATE PLANE COORDINATES OF CORNER: _____
NORTH _____
EAST _____

ELEVATION OF CORNER: _____ THETA ANGLE: _____

Horizontal Datum: Wisconsin State Plane Coordinate System, South Zone
NORTH AMERICAN DATUM 1927 1983

Vertical Datum: National Geodetic Vertical Datum of 1929

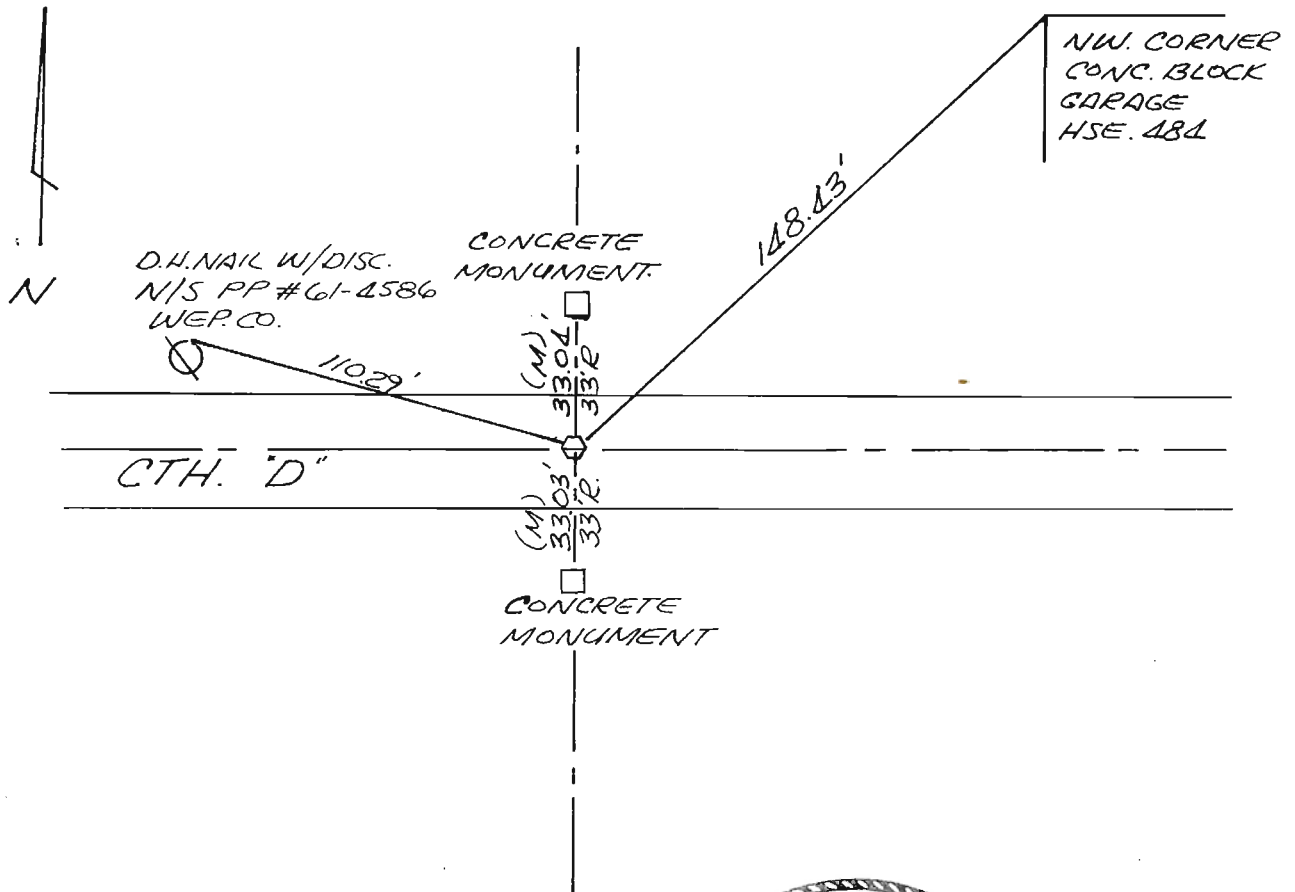
(b)(f)(g)(h) Description of monument found at this corner and if it was accepted, state all evidence (material, testimonial, occupational, plats, records, other monuments) used as a basis for accepting. If not accepted or if nothing was found, state evidence used as a basis for establishing location. If reestablished through lost corner proportionate methods, indicate all monuments, distances and directions used to establish.

Using two recorded concrete witness monuments, excavated.
Nothing found. Roadway in this area appears to have
3 to 4' of fill. Established corner on straight line at
mid-point between north and south concrete witness monuments.
Set Berntsen Aluminum monument with a 3 inch riser at corner.

INDEX NO 80

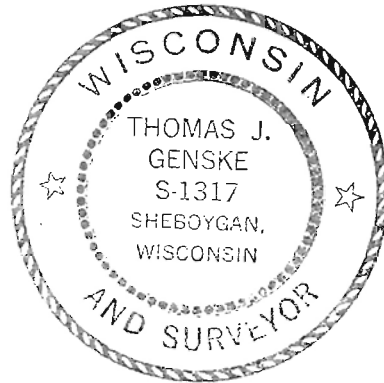
S 1/4 OF SECTION 13 T. 12 N; R. 22 E.

(c)(d)(e) Plan view of corner with ties to at least 4 witness monuments. If in disagreement with previously established corner, show the distances between the two corners and also indicate the ties to the disputed corner.



MAINTENANCE RECORD

Date	Init	Remarks



(i) I, THOMAS J. GENSKE s- 1317
 (type or print name) certify that the corner location on this record was determined by me or under my direction and control and that this U.S. Public Land Survey Monument Record is correct and complete to the best of my knowledge and belief.

Thomas J. Genske 2/25/92
 Signature COUNTY SURVEYOR Date

INDEX NO. 80