

OZAUKEE COUNTY

U.S. PUBLIC LAND SURVEY MONUMENT RECORD

Note: This form is intended and designed to fulfill all requirements of Wisconsin Administrative Code, Chapter A-E 5.02, U.S. Public Land Survey Monument Record (3)(a)(b)(c)(d)(e)(f)(g)(h)(i).

(a) CORNER LOCATION: W 1/4 SECTION 28

TOWNSHIP 12 NORTH

RANGE 22 EAST

(TOWN) CITY/VILLAGE BELGIUM

STATE PLANE COORDINATES OF CORNER: _____
NORTH _____
EAST _____

ELEVATION OF CORNER: _____ THETA ANGLE: _____

Horizontal Datum: Wisconsin State Plane Coordinate System, South Zone
NORTH AMERICAN DATUM 1927 1983

Vertical Datum: National Geodetic Vertical Datum of 1929

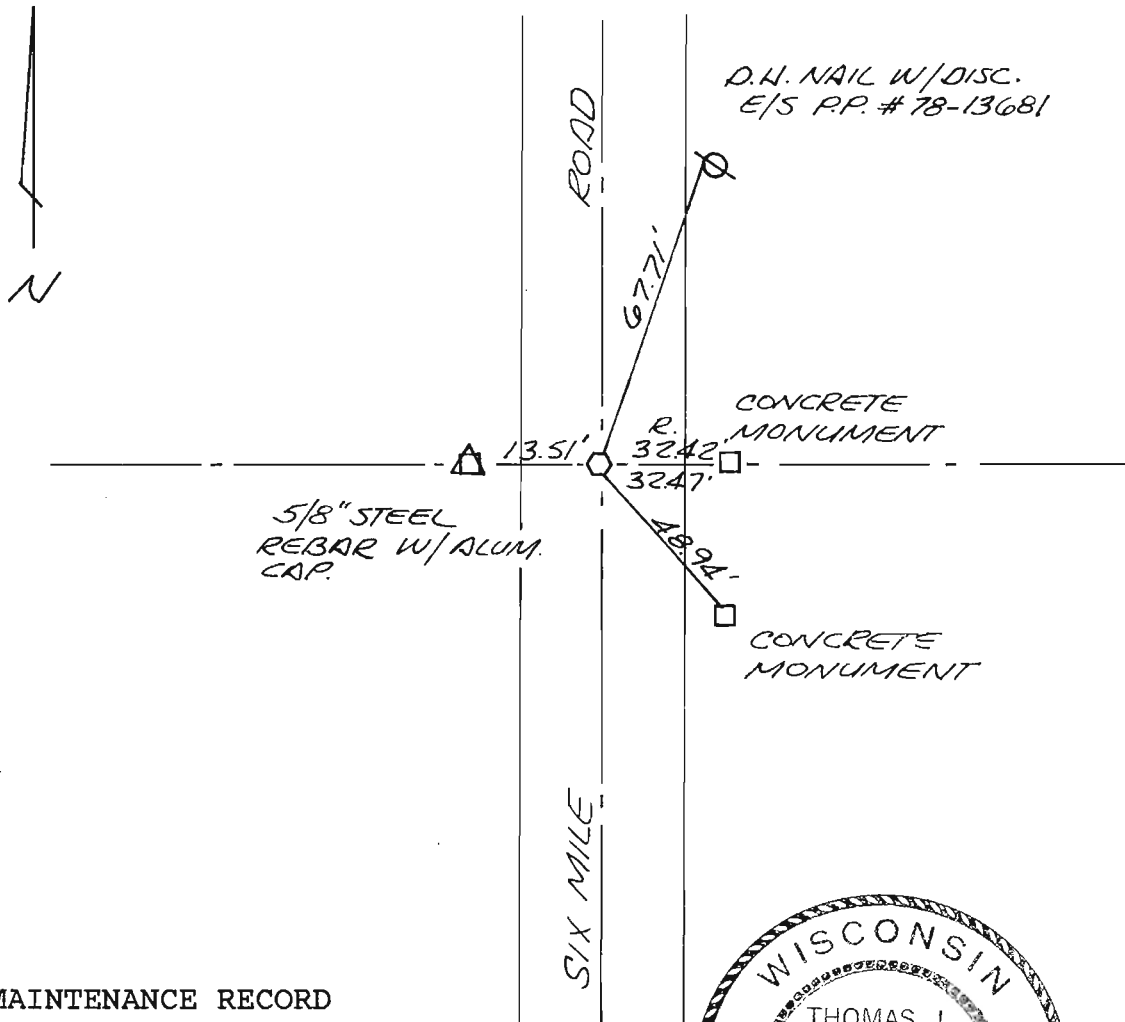
(b)(f)(g)(h) Description of monument found at this corner and if it was accepted, state all evidence (material, testimonial, occupational, plats, records, other monuments) used as a basis for accepting. If not accepted or if nothing was found, state evidence used as a basis for establishing location. If reestablished through lost corner proportionate methods, indicate all monuments, distances and directions used to establish.

Using two concrete witness monuments, found pk nail two inches below pavement surface. Limestone monument called for on L. Tousley's 1878 remonumentation map found twelve inches below pk nail. Accepted limestone monument as corner and replaced with a Berntsen Aluminum monument with a one inch riser.

INDEX NO 122

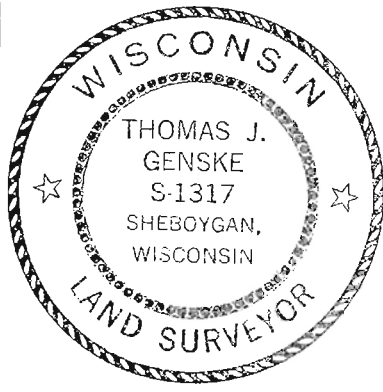
W 1/4 OF SECTION 28 T. 12 N; R. 22 E.

(c)(d)(e) Plan view of corner with ties to at least 4 witness monuments. If in disagreement with previously established corner, show the distances between the two corners and also indicate the ties to the disputed corner.



MAINTENANCE RECORD

Date	Init	Remarks



(i) I, THOMAS J. GENSKÉ S-1317
 (type or print name) certify that the corner location on this record was determined by me or under my direction and control and that this U.S. Public Land Survey Monument Record is correct and complete to the best of my knowledge and belief.

Signature Thomas J. Genske Date 2/26/92
 COUNTY SURVEYOR

INDEX NO. 122