



**SPORTING/MEET EVENT GROUP USE RESERVATION
APPLICATION FOR THE OZAUKEE COUNTY PARK SYSTEM
TENDICK PARK**

RESERVATION DATE / TIME _____

ORGANIZATION OR GROUP (SPONSOR) _____

CONTACT PERSON _____

E-MAIL _____

ADDRESS _____

TELEPHONE NUMBER _____

DESCRIPTION OF EVENT: Include estimated number of participants, time or range of times, **Ozaukee County Park to be used**, and any special needs (e.g. traffic control, waste removal). Please attach event brochure and/or pictures of past events, if available. Please attach additional sheets as necessary to describe the event and needs.

Please return your application 60 days prior to your requested reservation date. Ozaukee County Ordinance 5.01 Rules and Regulations Governing County Parks must be followed with the use of the Ozaukee County Park System and/or any local municipal ordinances as relevant. A fee will be charged as part of the approval process. A “group use” is defined as 25 or more persons involved in the requested event.

The Ozaukee County Park facilities (Ozaukee County Park System) are to be left in satisfactory condition. **Any damage or excessive clean-up will result in a maintenance billing and the possible loss of your group’s privilege to use the facility in the future. I acknowledge the above requirements for the group use of the Ozaukee County Park System.**

SIGNATURE _____ DATE _____

FURTHER INFORMATION/QUESTIONS: Andrew T. Struck, Director
PHONE: 262-284-8257 or 262-238-8257
FAX: 262-238-8269
astruck@co.ozaukee.wi.us

RETURN COPIES TO: OZAUKEE COUNTY - PLANNING AND PARKS DEPARTMENT
121 W. Main St., P.O. Box 994
Port Washington, WI 53074-0994

-OVER-

PERMIT APPROVED BY:
(RELEVANT APPROVALS AND REQUIRED FEES ARE CHECKED)

OZAUKEE COUNTY _____ DATE _____

REQUIRED FEE PAID _____ DATE _____

FEE SCHEDULE: FLAT RATE FEE OF \$150.00

The ORGANIZATION or GROUP (SPONSOR) listed hereby agrees to indemnify Ozaukee County for any and all damage or injury to any persons or property, which is in any way attributable to the above referenced event due to the organization's act or omission in the Ozaukee County Park System.

Under no circumstances will Ozaukee County be held responsible for damage to the Ozaukee County Park System, or be held responsible for damage to an adjoining private property as a result of the above referenced event and organization's act or omission. The ORGANIZATION or GROUP (SPONSOR) listed above accepts all such responsibility and agrees to indemnify Ozaukee County for any such claims related to the specified event and organization's act or omission.

The ORGANIZATION or GROUP (SPONSOR) should provide his or her own health and accident insurance. Ozaukee County may require a certificate of insurance and recommended coverage and/or require that Ozaukee County be listed as an "additional insured" for an event. The Public Works Committee of the Ozaukee County Board of Supervisors will determine the necessity of a certificate of insurance, recommended coverage, and "additional insured" listing based upon this application and description of the event.



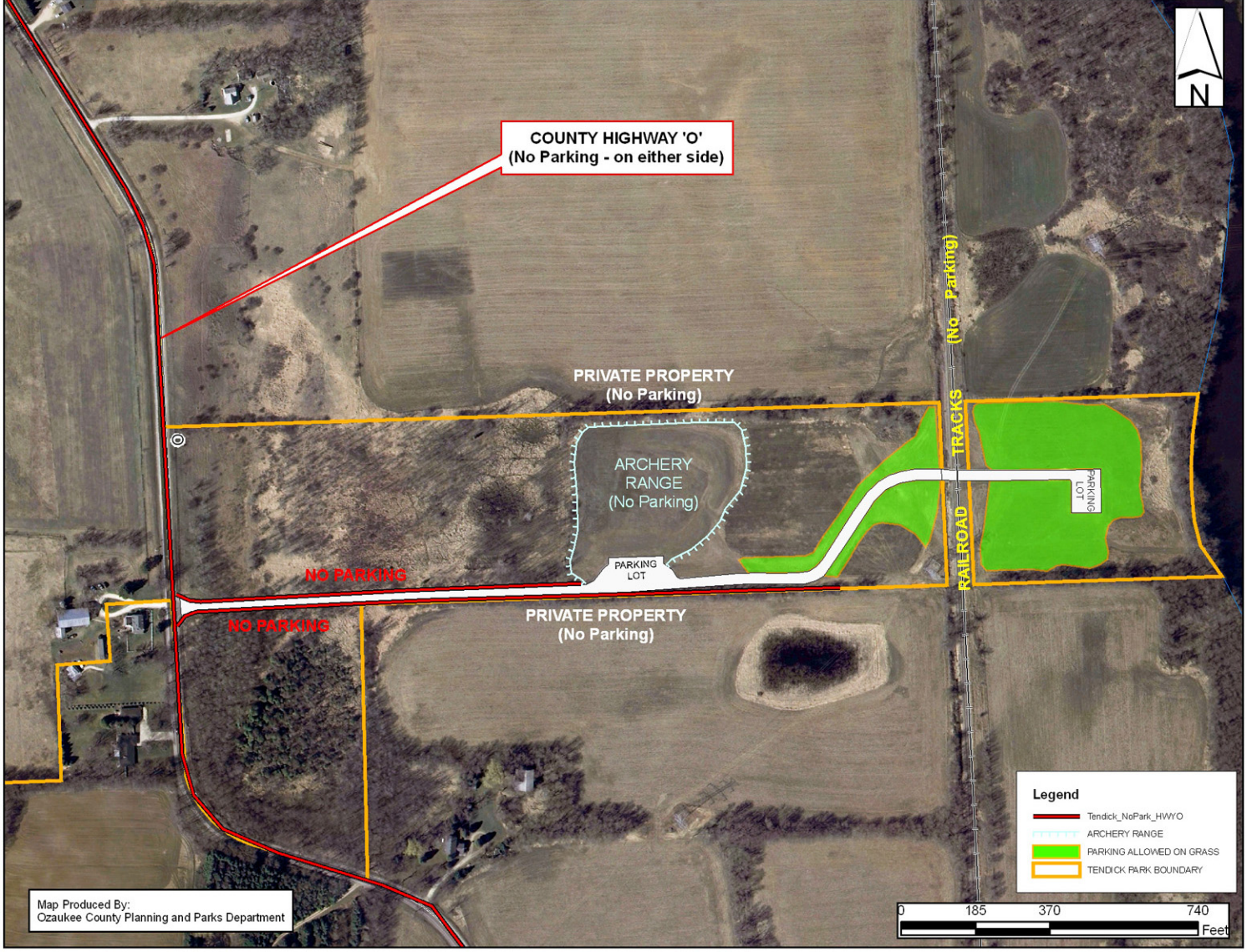
PLANNING & PARKS DEPARTMENT

Andrew Struck, Director
Tom Dueppen, Planning & Parks Specialist
Mark Lesar, Golf Course Supervisor
Dave Nowak, Parks Superintendent
Peter Fay, Golf Course Superintendent – Hawthorne Hills
Jon Stahl, Golf Course Superintendent – Mee-Kwon Park
www.co.ozaukee.wi.us

**Large Group Rules and Reservations for
CROSS COUNTRY
Athletic Competitions**

1. Parking in the main parking lot at Tendick Park will be reserved for busses, support staff, handicap and shuttle bus turn around. All other parking will be at the designated parking areas by the archery range. County highway O is now under ordinance for **NO PARKING**. The front entrance area is no parking at any time due to possible wet weather conditions. This will avoid confusion from one meet to the next and one year to the next.
2. It will be the sponsor school's responsibility to contact all schools involved with the event so "meet" participants and fans allow extra time to walk or shuttle to the event. Suggestion: Shuttles should be scheduled a minimum of one every 10 minutes from the archery range to the parking lot.
3. Schools sponsoring the event will supply a minimum of six people to direct traffic to parking areas and entrance way for the length of the event.
4. At least 8 metros shall be provided for each event by the event sponsor. The pavilion bathrooms will not be available.
5. County ordinance prohibits anyone from transacting or conducting any business of any nature, (food or merchandise) on County property.
6. It is forbidden to post paper information on any signs or structures with the exception of the kiosk on the north side of the pavilion.
7. Ozaukee County Parks Department will remove all garbage in garbage containers. The sponsor of the event will clean up all litter accumulated from the athletes and fans in and around park property immediately at the conclusion of the event.
8. The event sponsors will remove any and all set-up and support equipment brought on site such as barricades, traffic cones, mile markers, tents, etc. at the conclusion of the day of the event.

TENDICK NATURE PARK - GROUP USE PARKING AREA REGULATIONS / RESTRICTIONS



COUNTY HIGHWAY 'O'
(No Parking - on either side)

PRIVATE PROPERTY
(No Parking)

ARCHERY RANGE
(No Parking)

PARKING LOT

NO PARKING

NO PARKING

PRIVATE PROPERTY
(No Parking)

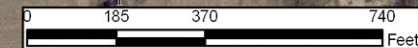
RAILROAD TRACKS (No Parking)

PARKING LOT

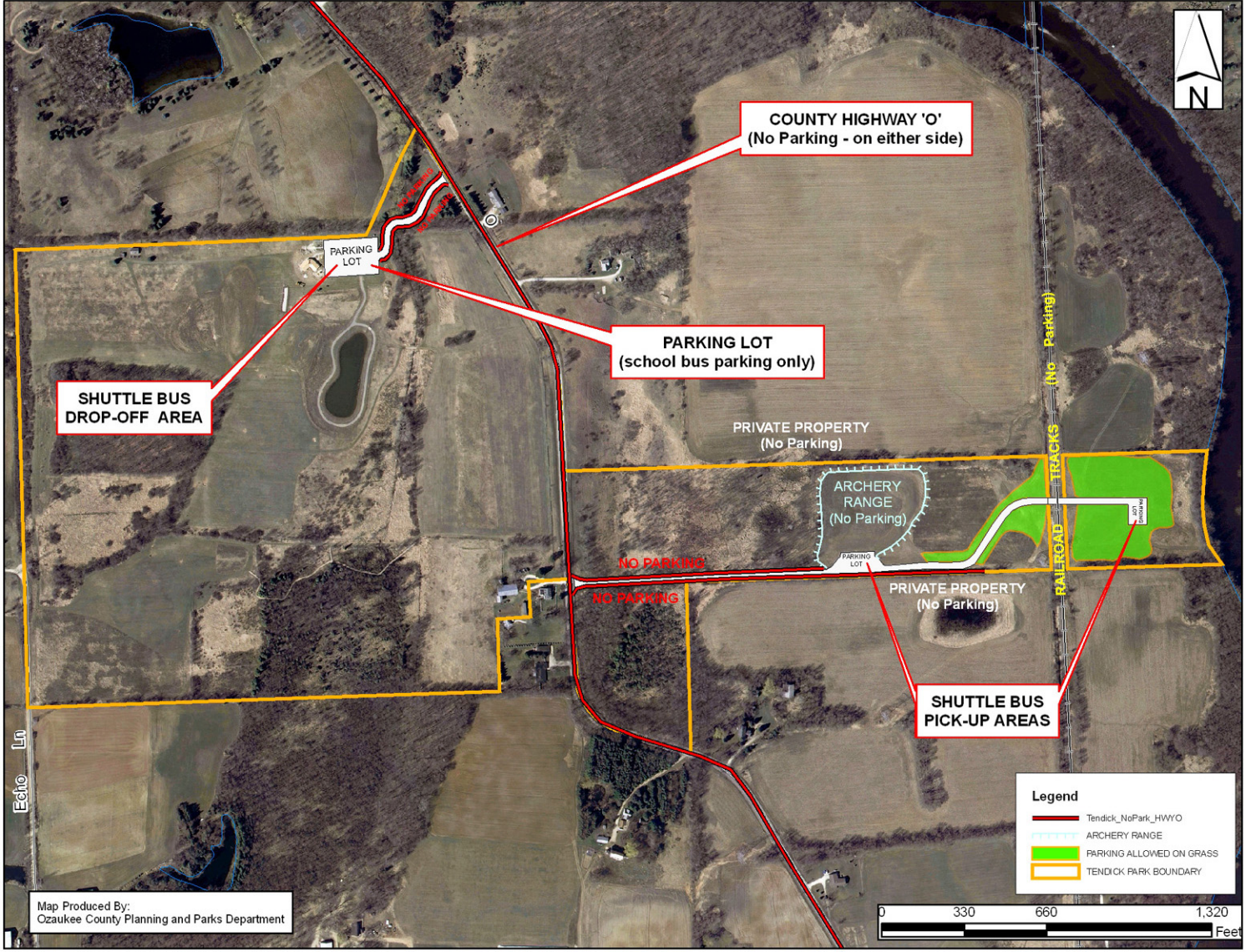
Legend

-  Tendick_NoPark_HWYO
-  ARCHERY RANGE
-  PARKING ALLOWED ON GRASS
-  TENDICK PARK BOUNDARY

Map Produced By:
Ozaukee County Planning and Parks Department



TENDICK NATURE PARK - GROUP USE PARKING AREA REGULATIONS / RESTRICTIONS



COUNTY HIGHWAY 'O'
(No Parking - on either side)

PARKING LOT
(school bus parking only)

SHUTTLE BUS
DROP-OFF AREA

ARCHERY RANGE
(No Parking)

PRIVATE PROPERTY
(No Parking)

SHUTTLE BUS
PICK-UP AREAS

NO PARKING

NO PARKING

PRIVATE PROPERTY
(No Parking)

- Legend**
- Tendick_NoPark_HWYO
 - ARCHERY RANGE
 - PARKING ALLOWED ON GRASS
 - TENDICK PARK BOUNDARY

Map Produced By:
Ozaukee County Planning and Parks Department

