

OZAUKEE COUNTY

U.S. PUBLIC LAND SURVEY MONUMENT RECORD

U.S. P.L.S. CORNER 32/33 T. 11 N., R. 22 E. OZAUKEE COUNTY, WI

GEODETIC SURVEY BY: KAPUR & ASSOCIATES, INC. YEAR: 1997

STATE PLANE COORDINATES OF:  
NORTH 508741.17  
EAST 2564181.40

ELEVATION OF STATION: 687.10

HORIZONTAL DATUM: WISCONSIN STATE PLANE COORDINATE, SOUTH ZONE  
NORTH AMERICAN DATUM: X 1927 1983  
VERTICAL DATUM: NATIONAL GEODETIC VERTICAL DATUM OF 1929

CONTROL ACCURACY: THETA ANGLE: 1-27-29.45

HORIZONTAL: 3RD ORDER, CLASS 1: VERTICAL: 3RD ORDER

DESCRIPTION OF MONUMENT AND HOW LOCATION WAS DETERMINED:

FOUND P.K. NAIL @ C.L.-C.L. OF CTH "C" AND "CC".  
ACCEPTED AS SECTION LINE. SET BERNTSEN MONUMENT.

CERTIFICATION

I CERTIFY THAT THE CORNER LOCATION ON THIS RECORD WAS DETERMINED BY ME OR UNDER MY DIRECTION AND CONTROL AND THAT THIS U.S. PUBLIC LAND SURVEY MONUMENT RECORD IS CORRECT AND COMPLETE TO THE BEST OF MY KNOWLEDGE AND BELIEF.

SIGNATURE Thomas J. Yenske S-1317  
OZAUKEE COUNTY SURVEYOR

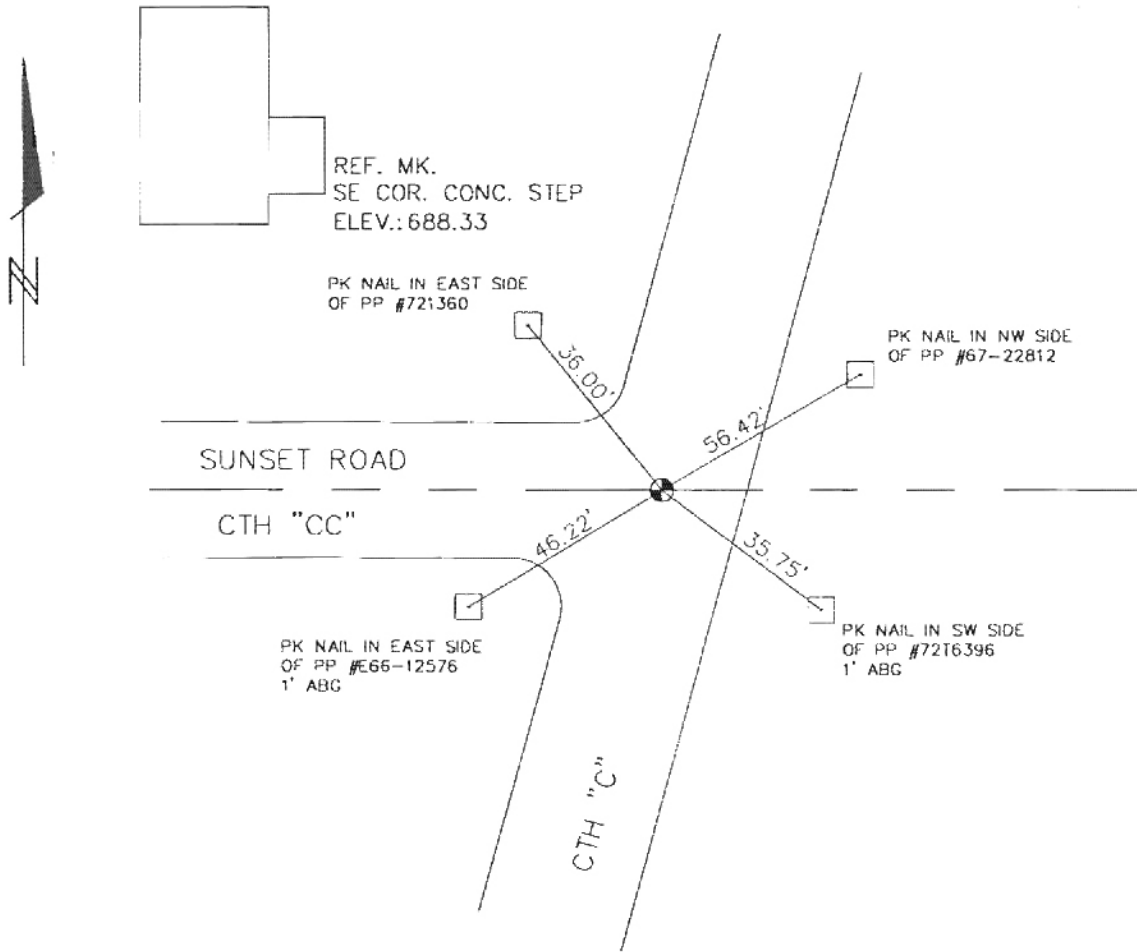
DATE: 10/16/98



# OZAUKEE COUNTY

## U.S. PUBLIC LAND SURVEY MONUMENT RECORD

### PLAN VIEW OF CORNER WITH TIES TO A MINIMUM OF 4 WITNESS MONUMENTS



#### MAINTENANCE RECORD

#### MONUMENT LEGEND

DATE	INITIAL	REMARKS
2/16/97	B.E.S.	

- ⊙ = BERNTSEN PLASTIC MONUMENT
- = CONCRETE WITH BRASS CAP
- ⊠ = CONCRETE WITH CROSS
- △ = 5/8" REBAR WITH ALUMINUM CAP