

# OZAUKEE COUNTY

## U.S. PUBLIC LAND SURVEY MONUMENT RECORD

U.S. P.L.S. CORNER  $\frac{30}{30}$  |  $\frac{30}{30}$  T. 11 N., R. 22 E. OZAUKEE COUNTY, WI

GEODETIC SURVEY BY: KAPUR & ASSOCIATES, INC. YEAR: 1997

STATE PLANE COORDINATES OF: \_\_\_\_\_

NORTH 513678.20

EAST 2555321.29

ELEVATION OF STATION: 805.34

HORIZONTAL DATUM: WISCONSIN STATE PLANE COORDINATE, SOUTH ZONE

NORTH AMERICAN DATUM: X 1927 \_\_\_\_\_ 1983

VERTICAL DATUM: NATIONAL GEODETIC VERTICAL DATUM OF 1929

CONTROL ACCURACY: \_\_\_\_\_ THETA ANGLE: 1-26-08.20

HORIZONTAL: 3RD ORDER, CLASS 1: VERTICAL: 3RD ORDER

### DESCRIPTION OF MONUMENT AND HOW LOCATION WAS DETERMINED:

SET CONC. MONUMENT W/ CAP.  
REPLACED 1" SQUARE IRON ROD, AS CALLED FOR BY SURROUNDING SURVEYS.

### CERTIFICATION

I CERTIFY THAT THE CORNER LOCATION ON THIS RECORD WAS DETERMINED BY ME OR UNDER MY DIRECTION AND CONTROL AND THAT THIS U.S. PUBLIC LAND SURVEY MONUMENT RECORD IS CORRECT AND COMPLETE TO THE BEST OF MY KNOWLEDGE AND BELIEF.

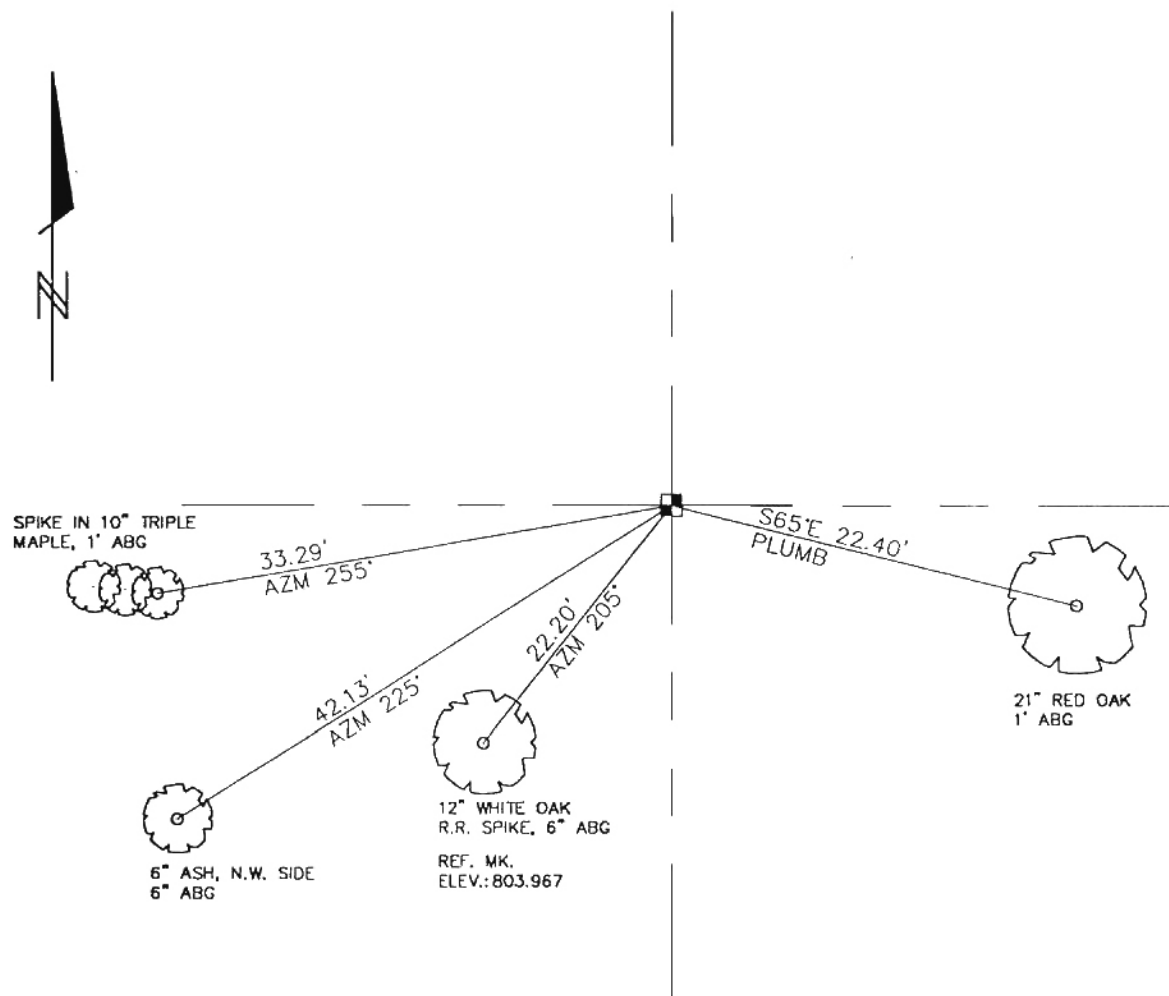
SIGNATURE Thomas J. Yenke S-1317 DATE: 6/16/98  
OZAUKEE COUNTY SURVEYOR



# OZAUKEE COUNTY

## U.S. PUBLIC LAND SURVEY MONUMENT RECORD

### PLAN VIEW OF CORNER WITH TIES TO A MINIMUM OF 4 WITNESS MONUMENTS



#### MAINTENANCE RECORD

DATE	INITIAL	REMARKS
4/17/97	K.E.K.	
_____	_____	_____
_____	_____	_____
_____	_____	_____
_____	_____	_____
_____	_____	_____

#### MONUMENT LEGEND

- ⊙ = BERNTSEN ALUMINUM MONUMENT
- = CONCRETE WITH BRASS CAP
- ⊕ = CONCRETE WITH CROSS
- △ = 5/8" REBAR WITH ALUMINUM CAP