

OZAUKEE COUNTY

U.S. PUBLIC LAND SURVEY MONUMENT RECORD

U.S. P.L.S. CORNER 20/20 20/20 T. 11 N., R. 22 E. OZAUKEE COUNTY, WI

GEODETIC SURVEY BY: KAPUR & ASSOCIATES, INC. YEAR: 1997

STATE PLANE COORDINATES OF: _____
NORTH 519199.48
EAST 2560430.92

ELEVATION OF STATION: 777.94

HORIZONTAL DATUM: WISCONSIN STATE PLANE COORDINATE, SOUTH ZONE
NORTH AMERICAN DATUM: X 1927 _____ 1983
VERTICAL DATUM: NATIONAL GEODETIC VERTICAL DATUM OF 1929

CONTROL ACCURACY: _____ THETA ANGLE: 1-26-57.03

HORIZONTAL: 3RD ORDER, CLASS 1: VERTICAL: 3RD ORDER

DESCRIPTION OF MONUMENT AND HOW LOCATION WAS DETERMINED:

FOUND 1" IRON PIPE CALLED FOR BY PREVIOUS SURVEY.
SET CONCRETE MONUMENT WITH BRASS CAP.

CERTIFICATION

I CERTIFY THAT THE CORNER LOCATION ON THIS RECORD WAS DETERMINED BY ME OR UNDER MY DIRECTION AND CONTROL AND THAT THIS U.S. PUBLIC LAND SURVEY MONUMENT RECORD IS CORRECT AND COMPLETE TO THE BEST OF MY KNOWLEDGE AND BELIEF.

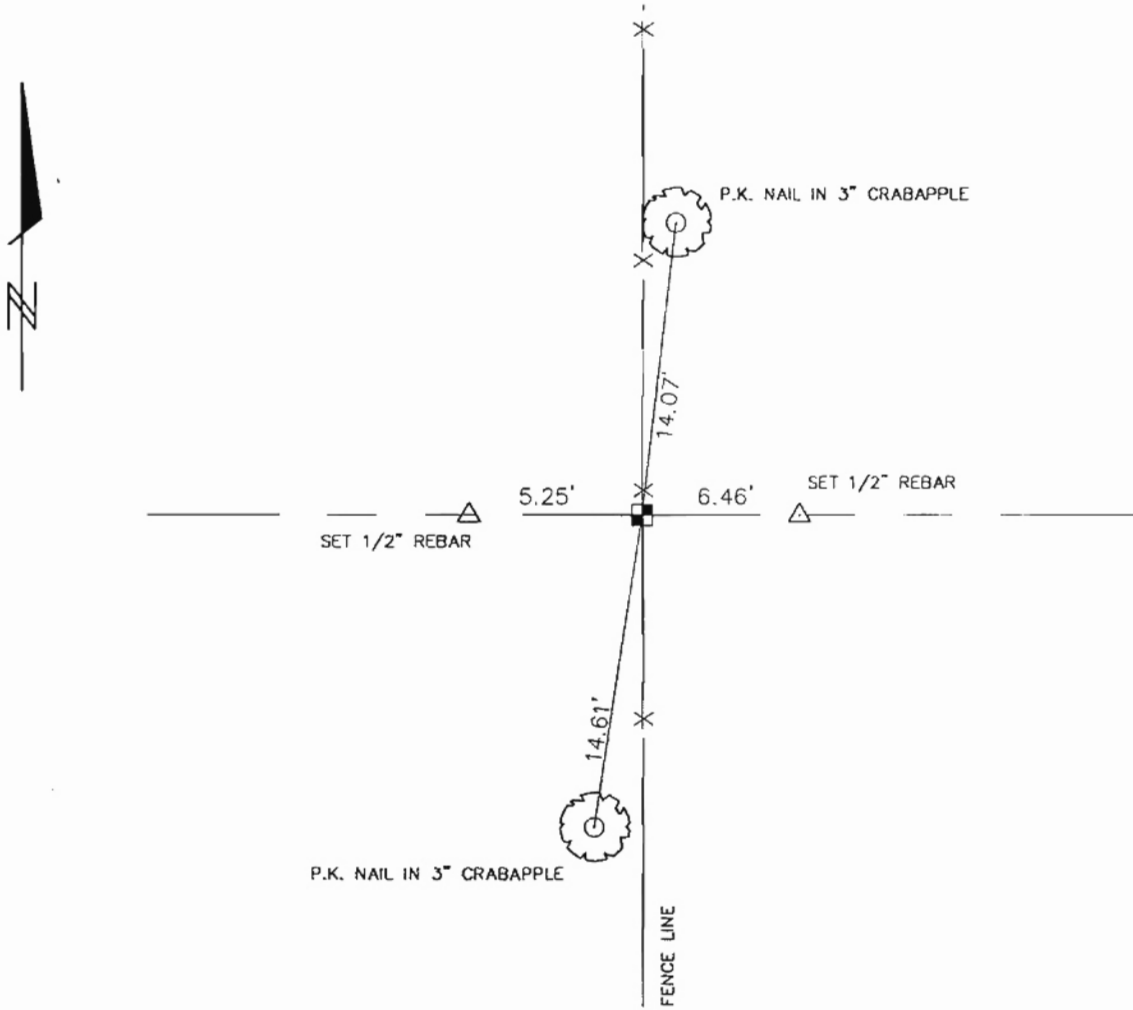
SIGNATURE Thomas J. Gunk S-1317 DATE: 6/16/98
OZAUKEE COUNTY SURVEYOR



OZAUKEE COUNTY

U.S. PUBLIC LAND SURVEY MONUMENT RECORD

PLAN VIEW OF CORNER WITH TIES TO A MINIMUM OF 4 WITNESS MONUMENTS



MAINTENANCE RECORD

MONUMENT LEGEND

| DATE | INITIAL | REMARKS |
|----------|---------|---------|
| 11/20/97 | B.E.S. | |
| _____ | _____ | _____ |
| _____ | _____ | _____ |
| _____ | _____ | _____ |
| _____ | _____ | _____ |
| _____ | _____ | _____ |

- ⊗ = BERNTSEN ALUMINUM MONUMENT
- ⊠ = CONCRETE WITH BRASS CAP
- ⊕ = CONCRETE WITH CROSS
- △ = 1/2" REBAR