

OZAUKEE COUNTY

U.S. PUBLIC LAND SURVEY MONUMENT RECORD

U.S. P.L.S. CORNER 13/18 T. 11 N., R. 21, 22 E. OZAUKEE COUNTY, WI
24/19

GEODETIC SURVEY BY: KAPUR & ASSOCIATES, INC. YEAR: 1997

STATE PLANE COORDINATES OF:
NORTH 521520.822
EAST 2552441.149

ELEVATION OF STATION: 807.998

HORIZONTAL DATUM: WISCONSIN STATE PLANE COORDINATE, SOUTH ZONE
NORTH AMERICAN DATUM: X 1927 1983
VERTICAL DATUM: NATIONAL GEODETIC VERTICAL DATUM OF 1929

CONTROL ACCURACY: THETA ANGLE: 1-25-43.22

HORIZONTAL: 3RD ORDER, CLASS 1; VERTICAL: 3RD ORDER

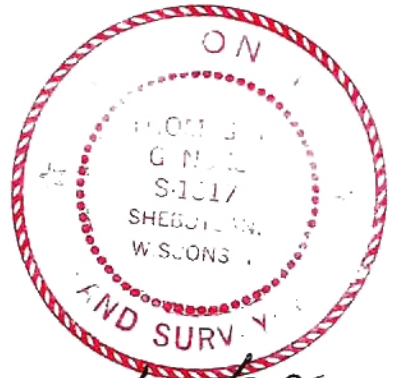
DESCRIPTION OF MONUMENT AND HOW LOCATION WAS DETERMINED:

FOUND P.K. NAIL THAT MATCHED PREVIOUS SURVEY.
SET PLASTIC BERNTSEN WITH BRASS CAP.

CERTIFICATION

I CERTIFY THAT THE CORNER LOCATION ON THIS RECORD WAS DETERMINED BY ME OR UNDER MY DIRECTION AND CONTROL AND THAT THIS U.S. PUBLIC LAND SURVEY MONUMENT RECORD IS CORRECT AND COMPLETE TO THE BEST OF MY KNOWLEDGE AND BELIEF.

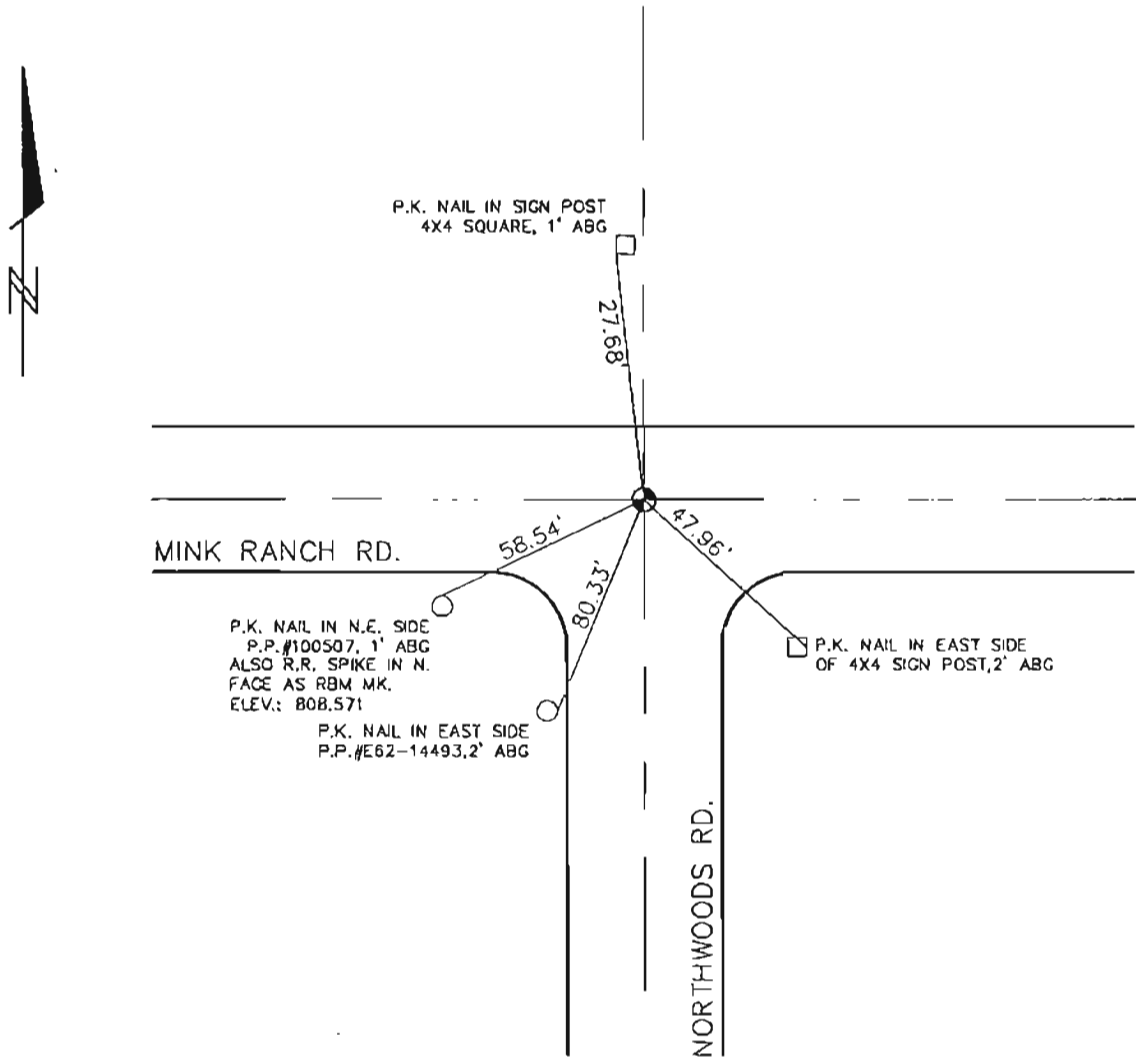
SIGNATURE Thomas J. Genske S-1317
OZAUKEE COUNTY SURVEYOR



DATE: 6/16/98

OZAUKEE COUNTY
U.S. PUBLIC LAND SURVEY MONUMENT RECORD

PLAN VIEW OF CORNER WITH TIES TO A MINIMUM OF 4 WITNESS MONUMENTS



MAINTENANCE RECORD

MONUMENT LEGEND

DATE	INITIAL	REMARKS
10/17/96	B.E.S.	
_____	_____	_____
_____	_____	_____
_____	_____	_____
_____	_____	_____

- ⊕ = PLASTIC BERNTSEN MON. WITH BRASS CAP
- = CONCRETE WITH BRASS CAP
- ⊕ = CONCRETE WITH CROSS
- △ = 5/8" REBAR WITH ALUMINUM CAP