

OZAUKEE COUNTY

U.S. PUBLIC LAND SURVEY MONUMENT RECORD

U.S. P.L.S. CORNER $\frac{32}{5} | \frac{32}{5}$ T. $\frac{12}{11}$ N., R. $\frac{22}{E}$ OZAUKEE COUNTY, WI

GEODETIC SURVEY BY: KAPUR & ASSOCIATES, INC. YEAR: 1997

STATE PLANE COORDINATES OF:
NORTH 537696.15
EAST 2560056.43

ELEVATION OF STATION: 792.10

HORIZONTAL DATUM: WISCONSIN STATE PLANE COORDINATE, SOUTH ZONE
NORTH AMERICAN DATUM: X 1927 1983
VERTICAL DATUM: NATIONAL GEODETIC VERTICAL DATUM OF 1929

CONTROL ACCURACY: THETA ANGLE: 1-26-57.90

HORIZONTAL: 3RD ORDER, CLASS 1: VERTICAL: 3RD ORDER

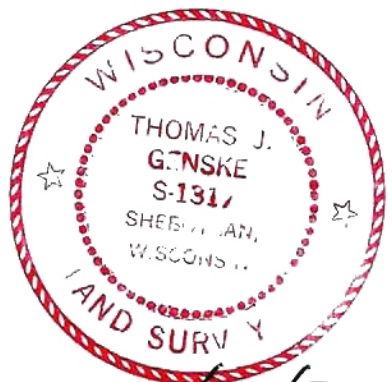
DESCRIPTION OF MONUMENT AND HOW LOCATION WAS DETERMINED:

FROM FOUND P.K. NAIL SET BERNTSEN PLASTIC MONUMENT ON BELGIUM TOWN LINE.

CERTIFICATION

I CERTIFY THAT THE CORNER LOCATION ON THIS RECORD WAS DETERMINED BY ME OR UNDER MY DIRECTION AND CONTROL AND THAT THIS U.S. PUBLIC LAND SURVEY MONUMENT RECORD IS CORRECT AND COMPLETE TO THE BEST OF MY KNOWLEDGE AND BELIEF.

SIGNATURE: Thomas J. Genske S-1317
OZAUKEE COUNTY SURVEYOR

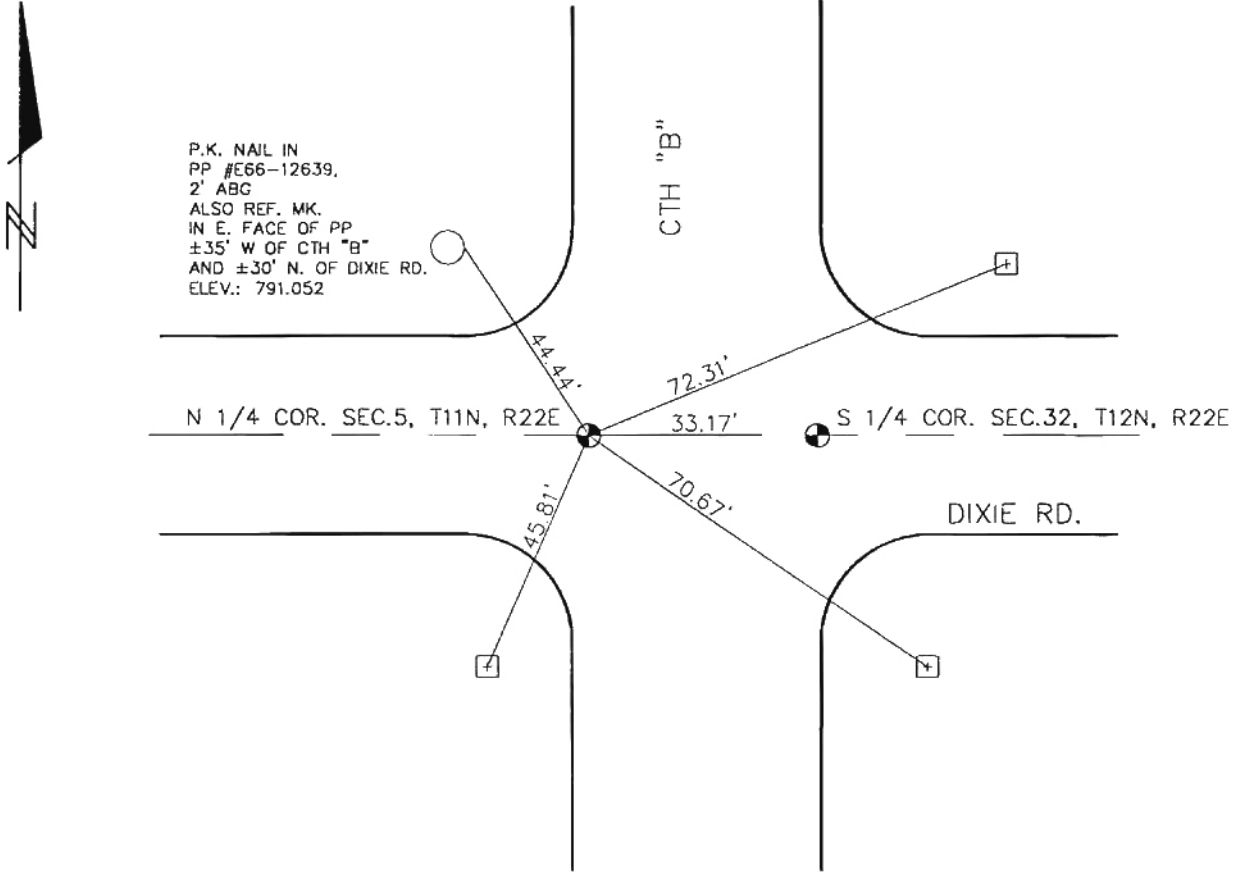


DATE: 6/16/98

OZAUKEE COUNTY

U.S. PUBLIC LAND SURVEY MONUMENT RECORD

PLAN VIEW OF CORNER WITH TIES TO A MINIMUM OF 4 WITNESS MONUMENTS



MAINTENANCE RECORD

MONUMENT LEGEND

DATE	INITIAL	REMARKS
3/25/97	B.E.S.	

- = BERNTSEN ALUMINUM MONUMENT
- = BERNTSEN PLASTIC MONUMENT
- ⊕ = 5"X5" CONC. MON. W/ CHIS "X"
- △ = 5/8" REBAR WITH ALUMINUM CAP