

Ozaukee County Committee Report
Special Revenue Fund Transit Services
For the Four Months Ending April 30, 2012
Profit and Loss Statement ACTUAL TO AMENDED BUDGET

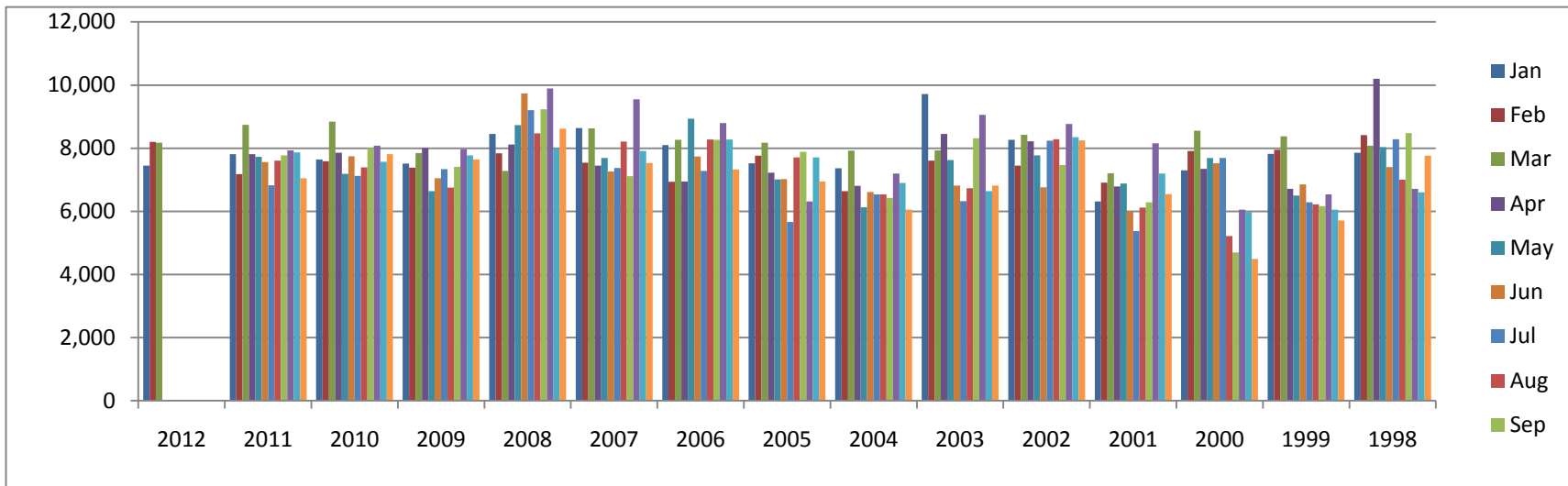
	Current Month Actual	2012 YTD Actual	2012 Amended Budget	Remaining Budget
Revenues				
Taxes		\$727,796	\$727,796	
Intergovernmental Revenues	483,288	817,898	1,644,866	826,968
Public Charges for Services	74,054	207,585	549,200	341,615
Fines/Forfeitures/Penalties	258	770	1,000	230
Other Revenue	90	90	11,250	11,160
Total Revenues	\$557,690	\$1,754,139	\$2,934,112	\$1,179,973
Expenditures				
Salaries	4,910	19,869	67,748	47,879
Fringe Benefits	1,550	6,213	19,114	12,901
Travel/Training	134	241	9,000	8,759
Supplies	25,792	77,672	300,330	222,658
Purchased Services	184,840	538,240	2,357,008	1,818,768
Interdepartment Charges	7,992	52,012	126,974	74,962
Other Expenses			43,938	43,938
Total Operating Expenditures	\$225,218	\$694,247	\$2,924,112	\$2,229,865
Capital Outlay				
Equipment & Furniture			60,000	60,000
Buildings & Land	76,705	1,041,846		(1,041,846)
Total Capital Outlay	\$76,705	\$1,041,846	\$60,000	(\$981,846)
Total Expenditures	\$301,923	\$1,736,093	\$2,984,112	\$1,248,019
Other Finance (Sources)		(50,000)	(50,000)	
Other Finance Uses		50,000		(50,000)
Net Other Financing Sources/Uses			(\$50,000)	(\$50,000)

Equity:

Undesignated Balance		(286,823)		286,823
----------------------	--	-----------	--	---------

2012 Express Bus Ridership

	Jan	Feb	Mar	Apr	May	Jun	Jul	Aug	Sep	Oct	Nov	Dec	Total
2012	7,446	8,197	8,178										
2011	7,812	7,181	8,740	7,810	7,731	7,559	6,826	7,608	7,776	7,933	7,868	7,051	91,895
2010	7,640	7,585	8,841	7,859	7,190	7,743	7,124	7,391	8,007	8,077	7,571	7,809	92,837
2009	7,514	7,385	7,851	8,008	6,640	7,045	7,340	6,752	7,410	7,970	7,775	7,647	89,337
2008	8,453	7,843	7,283	8,115	8,734	9,732	9,205	8,472	9,229	9,891	7,991	8,621	103,569
2007	8,638	7,543	8,628	7,448	7,688	7,266	7,378	8,212	7,113	9,552	7,910	7,535	94,911
2006	8,100	6,939	8,268	6,944	8,937	7,735	7,285	8,277	8,267	8,798	8,276	7,329	95,155
2005	7,524	7,763	8,172	7,221	7,013	7018	5,668	7,710	7,884	6,318	7,706	6,942	86,939
2004	7,361	6,642	7,921	6,809	6,130	6,611	6,535	6,535	6,424	7,196	6,898	6,051	81,113
2003	9,717	7,605	7,933	8,456	7,626	6,815	6,321	6,737	8,317	9,057	6,640	6,815	92,039
2002	8,266	7,447	8,426	8,224	7,778	6,762	8,241	8,285	7,468	8,764	8,354	8,251	96,266
2001	6,311	6,907	7,205	6,790	6,880	6,003	5,371	6,121	6,282	8,155	7,196	6,548	79,769
2000	7,304	7,912	8,557	7,345	7,693	7,526	7,688	5,214	4,701	6,053	5,976	4,494	80,463
1999	7,819	7,950	8,382	6,715	6,504	6,852	6,283	6,220	6,165	6,540	6,058	5,712	81,200
1998	7,862	8,416	8,080	10,196	8,035	7,401	8,283	7,000	8,482	6,717	6,600	7,762	94,834
Change From Previous Year	-4.69%	14.15%	-6.43%										
Change From Previous Month	5.60%	10.09%	-0.23%										



Bus Bike Rack Use

	Jan	Feb	Mar	Apr	May	Jun	Jul	Aug	Sep	Oct	Nov	Dec	Total
2012	35	19	51										
2011	18	11	24	28	63	93	65	110	76	46	46	58	638
2010	17	17	32	12	20	38	54	89	56	59	29	19	442

2011 Shared-Ride Taxi Report

	<i>Jan</i>	<i>Feb</i>	<i>Mar</i>	<i>Apr</i>	<i>May</i>	<i>Jun</i>	<i>Jul</i>	<i>Aug</i>	<i>Sep</i>	<i>Oct</i>	<i>Nov</i>	<i>Dec</i>	<i>Totals</i>
<i>Administrative Cost</i>	\$22,103	\$5,542	\$11,394										
<i>CMAQ Marketing</i>	\$798	\$2,666	\$1,005										
<i>Maintenance/Labor</i>	\$5,801	\$5,117	\$4,953										
<i>Parts & Tires</i>	\$2,625	\$1,705	\$1,771										
<i>Oil & Lubricants</i>	\$409	\$361	\$486										
<i>Fuel</i>	\$22,195	\$21,466	\$25,792										
<i>Purchase of Service</i>	\$95,073	89786.41	\$96,714										
Total for Month	\$149,003	\$126,644	\$142,114										
<i>Farebox</i>	\$6,192	\$6,421	\$10,440										
<i>Punch Card</i>	\$11,680	\$5,720	\$17,433										
<i>Agency Fare</i>	\$34,344	\$0	\$14,688										
No Show Fine Revent	\$263	250	\$258										
<i>Donations/Sale of Co</i>	\$0	\$0	\$0										
Net Cost	\$130,868	\$114,253	\$113,984										
<i>Cost Per Trip</i>	\$19.15	\$16.03	\$18.19										
<i>Net Cost Per Trip</i>	\$16.82	\$14.46	\$14.59										
Year to Date													
<i>Administrative Cost</i>	\$22,103	\$27,645	\$39,038										
<i>CMAQ Marketing</i>	\$798	\$3,464	\$4,469										
<i>Maintenance/Labor</i>	\$5,801	\$10,918	\$15,871										
<i>Parts</i>	\$2,625	\$4,329	\$6,101										
<i>Oil & Lubricants</i>	\$409	\$770	\$1,256										
<i>Fuel</i>	\$22,195	\$43,661	\$69,453										
<i>Purchase of Service</i>	\$95,073	\$184,859	\$281,573										
Total YTD	\$149,003	\$275,647	\$417,761										
<i>Farebox</i>	\$6,192	\$12,613	\$23,053										
<i>Punch Card Sales-Offi</i>	\$10,000	\$17,400	\$34,833										
No Show Fines	\$263	\$513	\$770										
<i>Donations/Sale of Co</i>	\$0	\$0	\$0										
Net Cost	\$130,868	\$245,121	\$359,105										
<i>Ridership</i>	7,780	15,681	23,492										
<i>Cost Per Trip</i>	\$19.15	\$17.58	\$17.78										
<i>Net Cost Per Trip</i>	\$16.82	\$15.63	\$15.29										
<i>Billed Service Hours</i>	4,207	3,972	4,279										
<i>No Shows</i>	132	245	383										
<i>Cancel</i>	967	1,858	2,750										

Contract Hourly Rate \$22.60 includes STS management, drivers, dispatch and vehicle liability coverage. Total vehicle service hours for 2012 is 53,122

Shared-Ride Taxi Ridership

	Jan	Feb	Mar	Apr	May	Jun	Jul	Aug	Sep	Oct	Nov	Dec	Totals
2012 Monthly Ridership	7,780	7,901	7,811										
2011 Monthly Ridership	6,479	5,819	7,561	6,724	6,786	6,433	5,850	6,775	6,872	6,997	6,854	6,736	79,886
2010 Monthly Ridership	5,820	5,665	6,795	6,251	5,803	5,858	5,928	5,666	6,353	6,870	6,870	6,709	74,588
2009 Monthly Ridership	5,983	6,287	6,719	6,420	6,046	5,721	5,802	5,348	5,522	6,243	5,692	5,734	71,517
2008 Monthly Ridership	6,379	6,496	6,330	6,897	6,737	6,059	6,125	5,600	6,084	6,880	5,653	5,812	75,052
2007 Monthly Ridership	6,253	5,843	6,542	6,089	6,548	5,631	5,482	6,028	5,997	6,979	6,476	5,351	73,219
2006 Monthly Ridership	5,779	5,700	6,727	5,717	6,302	5,519	4,895	5,809	5,851	6,548	6,291	5,370	70,508
2005 Monthly Ridership	5,907	5,925	6,716	6,292	5,965	5,211	4,836	5,444					
Same month 2012 vs. 2011	20.08%	35.78%											
Change/previous Month	15.50%	2.61%											

